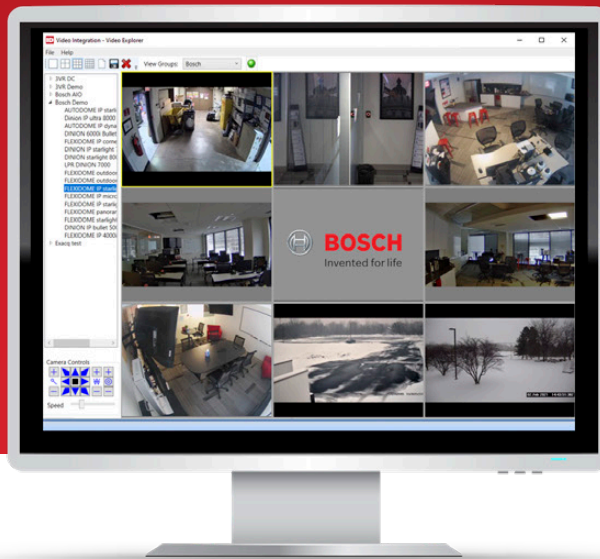




Hirsch Velocity Software

Bosch VMS Integration



Identiv's Hirsch Velocity Software manages access control, provides intrusion detection, and now integrates with the Bosch VSM and cameras.

Video integration is a vital element of a complete security and access control system. When integrated properly with Velocity, multiple devices combine best-in-class physical security into one powerful solution that manages video, audio, and data.

Identiv partnered with Bosch to develop this exact type of seamless integration. The solution allows full video management system (VMS) functionality with centralized control of cameras, connected devices, recording servers, and redundant servers.

As a complete security management system, Velocity verifies who is allowed in and out of facilities.

Combining this system with Bosch VMS allows for visual verification of who is moving through high-security areas. The integration provides video evidence for security events, including tailgating. Tailgating occurs when someone is trailing an employee and gains entry to an area without swiping a card. Recording IP video at all doors allows quick identification of who should or should not be in the building.

All Bosch cameras, network video recorders (NVRs) and Onvif-compatible cameras can be integrated with Velocity to provide a single interface to track video and access control systems.

Integrated Video Intelligence

- View live video in full screen (2x2/3x3/4x4 layouts)
- Quickly scan and view recorded video
- Search video by events

Velocity Highlights

- Velocity Trigger Action Manager
- Integrates with Velocity Graphics

Bosch Highlights

- Multiple video playback speeds
- Control PTZ cameras

Added Camera Support

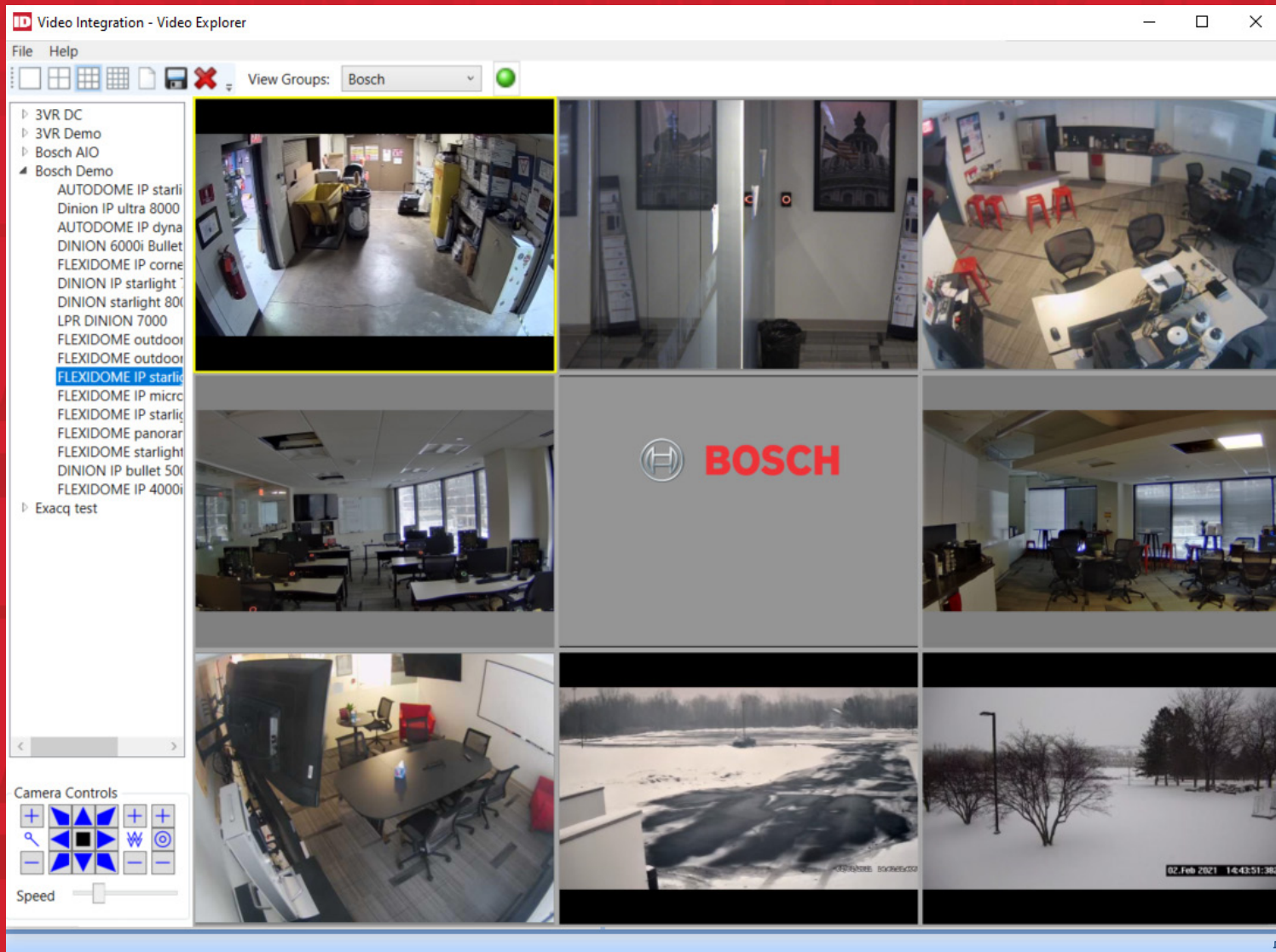
- Connects with all Bosch camera families, including AUTOMDOME, FLEXIDOME, DINION, and MIC
- Integrates with all Onvif-compatible cameras

Features

Add/Manage Bosch VMS from Velocity	Add, edit, or delete the Bosch VMS using the Velocity interface configuration
Test DVR Network	Test network connection from Velocity and sync or validate times and dates
Integrated Cameras	View integrated cameras from Velocity and make them available for use in the Velocity hardware tree and graphics canvases; includes connection state and viewing options
Trigger Action Manager	Set trigger actions on Velocity events to call up specific cameras/views and automatically display the video in Velocity; trigger actions are also used to instruct the VMS to record, with pre/post-alarm and frame rate
Authentication	Authentication to Bosch VMS using login specified in Bosch VMS; provides encrypted communication
Live Video	Get live video display and trigger manual recordings on individual cameras from within Velocity
Playback	Watch playback of historical video recorded in response to triggered alarms setup in the trigger action manager; access recorded video directly from Velocity alarm manager
Video Explorer	Display live video in the Velocity video explorer window which supports up to 16 panels at a time
Integrated Events	Events from the Bosch VMS can be mapped to the equivalent Velocity integrated events like motion detected and camera offline; events can be used to perform actions in Velocity (lockdown, email, trigger master control zone)
Graphics	Configure the Bosch VMS within graphics object library; view live video

Ordering Information

Part Number	VEL-VMS-BOSCH-PLUGIN
Description	Velocity Video Management System Integration for Bosch



The screenshot displays the Velocity 3.8.3 Trunk software interface. At the top, there is a navigation bar with icons for Administration, Customization Manager, Alarm Viewer, Event Viewer, Graphics, Status Viewer, Who's Inside, Report Manager, Enrollment Manager, Badge Designer, NVR / DVR Viewer, CCTV Viewer, and Video Integration (Video Explorer). Below this is the 'Alarm Viewer' section, which contains a table of active alarms. The table has columns for Co..., Host Time, Description, Address, Le..., and Alarm ID. Three alarms are listed, all with a severity level of 1 and Alarm ID 10308. Below the alarm table is the 'Administration' section, which shows a tree view of hardware views including Configuration, Velocity Configuration, DIGI*TRAC Configuration, Interfaces Configuration, CCTV, Serial Port Writers, E-mail Writers, Message Queue Writers, Video Integration, Bosch Demo, Jim Home, and Velocity Integrations. A context menu is open over the 'Full Image' option, showing 'View Camera', 'Record on Camera', and 'Play recorded video'. At the bottom is the 'Event Viewer' section, which contains a table of events with columns for Host Time, Description, Address, Event Type, and Event ID. Five events are listed, including motion detection and video resume/loss events.

Co...	Host Time	Description	Address	Le...	Alarm ID
	12/15/2020 2:52:09 PM	Motion detected on DVR / NVR device Bosch Demo (192.182.198.89) camera AUTODOME IP dynamic 7000...	\\DVRX.001.019.126	1	10308
	12/15/2020 2:52:18 PM	Motion detected on DVR / NVR device Bosch Demo (192.182.198.89) camera Dinion IP ultra 8000 MP	\\DVRX.001.019.125	1	10308
	12/15/2020 3:33:56 PM	Motion detected on DVR / NVR device Bosch Demo (192.182.198.89) camera AUTODOME IP dynamic 7000...	\\DVRX.001.019.126	1	10308

Co...	Acknowledge Time	Workstation	Description	Address	Acknowledged By
	12/15/2020 2:53:03 PM	ETHEREALDRAGON	Motion detection ended on DVR...	\\DVRX.001.019.125	Velocity
	12/15/2020 2:53:03 PM	ETHEREALDRAGON	Motion detection ended on DVR...	\\DVRX.001.019.125	Velocity
	12/15/2020 3:34:24 PM	ETHEREALDRAGON	Motion detection ended on DVR...	\\DVRX.001.019.126	Velocity

Host Time	Description	Address	Event Type	Event ID
12/18/2020 1:09:51 PM	Motion detection ended on DVR / NVR device Bosch Demo (192.182.198.89) camera AUTODOME IP dynamic 7000 HD after 42 seconds	\\DVRX.001.019.126	Software	10310
12/18/2020 1:09:09 PM	Motion detected on DVR / NVR device Bosch Demo (192.182.198.89) camera AUTODOME IP dynamic 7000 HD	\\DVRX.001.019.126	DIGI*TRAC Alarm	10308
12/18/2020 1:04:57 PM	Video resume on DVR / NVR device Bosch Demo (192.182.198.89) camera AUTODOME IP dynamic 7000 HD after 0 seconds	\\DVRX.001.019.126	Software	10324
12/18/2020 1:04:51 PM	Video loss on DVR / NVR device Bosch Demo (192.182.198.89) camera AUTODOME IP dynamic 7000 HD	\\DVRX.001.019.126	DIGI*TRAC Alarm	10323
12/18/2020 1:04:49 PM	Video resume on DVR / NVR device Bosch Demo (192.182.198.89) camera Dinion IP ultra 8000 MP after 0 seconds	\\DVRX.001.019.125	Software	10324

Video Integration - Trigger Action Manager

Trigger.Location	Trigger.Events	Action.Object	Action.ViewGroup

Triggers

Locations

- [-] DIGI*TRAC Hardware
 - [-] Snib3
 - [-] Xbox3
 - Mx1
 - Door 01
 - Input 02
 - Relay 02
 - XRelay 01
 - XRelay 02
 - XRelay 03
 - XRelay 04
 - XRelay 05

Events

- 5003 - DOTL at input %
- 5004 - Parallel printer offline at c
- 5005 - AC power fail at controller
- 5006 - Memory battery bad at cc
- 5007 - UPS low at controller %
- 5008 - Enclosure tamper at cont
- 5009 - Physical tamper at reade
- 5010 - CODE tamper at reader %
- 5011 - User % under duress at re
- 5012 - Input % noisy
- 5013 - Input % shorted

Actions

Cameras

- [-] Bosch Demo (192.182.198.89)
 - AUTODOME IP dynamic 70
 - AUTODOME IP starlight 5000
 - DINION 6000i Bullet
 - DINION IP bullet 5000 HD
 - DINION IP starlight 7000 HC
 - Dinion IP ultra 8000 MP
 - DINION starlight 8000
 - FLEXIDOME IP 4000i
 - FLEXIDOME IP corner 900C
 - FLEXIDOME IP micro 5000

Show View Group: <None>

AUTODOME IP starlight 5000

Record Duration: 90 (1-3600 sec)

Preset:

Help
Add
Accept

The screenshot displays the IDENTIV Velocity 3.8.3 Trunk software interface. The top navigation bar includes sections for Configuration, System Activity, Credentialing, and Video. The main workspace is divided into three panes:

- Administration:** A tree view on the left shows the system hierarchy, with 'Video Integration' selected. The right pane lists actions like 'Add New DVR/NVR', 'External Video Plugins', 'Search Video Events', and 'Trigger Action Manager'.
- Alarm Viewer:** A table on the right shows alarm events. A context menu is open over a selected event, with 'Video Integration Alarm Video' highlighted. A 'Get Recorded Alarm Video' button is visible below the menu.
- Event Viewer:** A table at the bottom lists system events with columns for Host Time, Description, Address, Event Type, and Event ID.

Host Time	Description	Address	Event Type	Event ID
12/18/2020 1:19:22 PM	Relay Relay 02 state change (1) control zone trigger	\\XNET.001.0001.001....	DIGI*TRAC Internal	9033
12/18/2020 1:19:22 PM	Enclosure tamper at controller Mx1	\\XNET.001.0001.001.01	DIGI*TRAC Alarm	5008
12/18/2020 1:18:27 PM	Trigger Action Event 5008 at Mx1 for AUTODOME IP starlight 5000 added by 3THER	\\WETHEREALDRAGON...	Software	1184
12/18/2020 1:16:12 PM	Input state change at alarm Input 01 to Open Circuit current masking None (alarm priority)	\\XNET.001.0001.001....	DIGI*TRAC External	4023
12/18/2020 1:16:12 PM	Relay Relay 01 state change (0) none	\\XNET.001.0001.001....	DIGI*TRAC Internal	9033
12/18/2020 1:16:06 PM	Input state change at alarm Input 01 to Open Circuit current masking Door Relay (alarm priority)	\\XNET.001.0001.001....	DIGI*TRAC External	4023

ID Video Integration - Search Video
— □ ×

Search

Cameras:

- Bosch Demo
- AUTODOME IP starlight 5000
- Dinion IP ultra 8000 MP
- AUTODOME IP dynamic 7000 HD
- DINION 6000i Bullet
- FLEXIDOME IP comer 9000 MP
- DINION IP starlight 7000 HD
- DINION starlight 8000
- LPR DINION 7000
- FLEXIDOME outdoor 5000 IR 5MP
- FLEXIDOME outdoor 5000 HD 2MP
- FLEXIDOME IP starlight 7000 V
- FLEXIDOME IP micro 5000
- FLEXIDOME IP starlight 6000 VR
- FLEXIDOME panoramic 5000

Date Range:

Wednesday, December 11, 2019 1:23:29 PM

Friday, December 18, 2020 1:23:29 PM

Events:

Event ID	Event Type	Description
<input checked="" type="checkbox"/> 5008	Alarm	Enclosure tamper at controller %

Results

Start Time	Duration	Description
12/18/2020 1:19:22 PM	15	Enclosure tamper at controller Mx1 Play

Start Date/Time: 12/18/2020 1:19:22 | End Date/Time: 12/18/2020 1:19:37 | Speed: Normal