



# Identiv Connected Physical Access Manager (ICPAM)

Ordering Guide for Cisco Sales  
Organization and Identiv Partners

August 2017

# Table of Contents

Cisco Sales Organization ICPAM Ordering Guide .....	3
<b>1. Introduction .....</b>	<b>3</b>
1.1. Audience .....	3
1.2. Eligibility .....	3
<b>2. ICPAM Description .....</b>	<b>4</b>
2.1. Overview .....	4
2.1.1. Features of ICPAM Version 3.0 .....	4
2.2. ICPAM Bundles .....	5
2.2.1. Mullion Reader Bundles with Wall Mount Reader Bundles .....	5
2.2.2. Keypad Reader Bundles .....	5
2.2.3. TS ScramblePad Readers Bundle .....	5
2.2.4. ICPAM Bundle Options .....	5
2.3. Software Licenses .....	6
2.3.1. Determining the Number of Modules for the Software License Agreement.....	6
2.3.2. Software e-Delivery.....	6
2.3.3. Software Support .....	6
2.3.4. Additional Software Licensing for ICPAM .....	7
2.3.5. License Enrollment .....	7
2.4. Optional TS Reader Configuration Choices Available.....	7
<b>3. ICPAM Compliance and Export Regulations .....</b>	<b>7</b>
<b>4. ICPAM Ordering Steps .....</b>	<b>10</b>
<b>Step 1: Evaluate the number of doors, gates, or barriers in the physical deployment .....</b>	<b>10</b>
<b>Step 2: Determine what kind of hardware will best suit the customer's environment .....</b>	<b>10</b>
<b>Step 3: Select the type of reader for the deployment .....</b>	<b>11</b>
<b>Step 4: Select the Software License Agreement (SLA) that best matches the ICPAM solution .....</b>	<b>12</b>
<b>Step 5: Select additional licenses for High Availability, Enterprise Data Integration, Web API, and Badge Designer (Optional) .....</b>	<b>13</b>
<b>Step 6: Select the appropriate hardware or bundle for the deployment .....</b>	<b>13</b>
<b>Step 7: Migrating an existing CPAM customer to ICPAM .....</b>	<b>18</b>
<b>Step 8: Building the Build of Materials (BOM) .....</b>	<b>19</b>
<b>Step 9: Frequently Asked Questions .....</b>	<b>21</b>
<b>For Sales Assistance .....</b>	<b>21</b>
<b>For More Information .....</b>	<b>21</b>

---

# Cisco Sales Organization ICPAM Ordering Guide

In today's increasingly complex and rapidly changing world, it is crucial to implement the best solutions for securing your assets. Physical security remains a critical component of providing a robust and safe environment. This presents a large opportunity for Cisco to provide their Connected Safety and Security (Cisco CSS) solutions portfolio. Cisco has partnered with Identiv, an industry leader in forward-thinking physical security products and solutions, in order to offer the Identiv Connected Physical Access Manager (ICPAM) product family of physical access components. ICPAM works in conjunction with the Cisco CSS portfolio of products, including Cisco Video Surveillance Manager (Cisco VSM) and Cisco Cameras.

The ICPAM product family will take the place of the product formerly known as Cisco Physical Access Manager (CPAM). The ICPAM product family enables customers to deploy a physical access solution in order to secure their premise and grants the ability to control who enters and exits their buildings. This solution is part of the larger Cisco Connected Safety and Security portfolio and provides user authentication, including audit trails of who enters buildings and proof of presence in a building.

ICPAM solutions are offered through a variety of bundle options or individual components that can be purchased a-la-carte to provide a fully customized and scalable systems tailored to an end user's needs. Bundle options include a controller, door reader and one (1) year of hardware and technical support. The bundle purchase option is the most effective way to quote an implementation, since you will only need to purchase one bundle per door.

## 1. Introduction

This document describes the packaging structure and ordering for ICPAM bundles or à la carte.

### 1.1. Audience

This guide is designed to help the Cisco Sales Organization, Cisco channel partners, and Identiv partners correctly size and order an ICPAM solution. It is highly recommended that partners and account teams work closely with Identiv's business development, product management, sales engineers or product solution specialists to correctly scope the solution. For questions or more information please send an email to [cisco@identiv.com](mailto:cisco@identiv.com).

### 1.2. Eligibility

In order to deploy an ICPAM solution, there are some pre-conditions that must be met. They are as follows:

- The partner must be a Cisco Authorized Technology Provider. For more information, please contact your Identiv or Cisco Channel Manager.
- Certified Cisco partners authorized to resell ICPAM are encouraged to attend instructor-led training to be certified in installing and administering ICPAM. Contact Cisco/Identiv Sales Channel Manager for details.

## 2. ICPAM Description

### 2.1. Overview

The ICPAM system includes premises access management system combining strong authentication at the door with identity verification on a secure credential. The system includes support for legacy systems, allowing companies to transition from physical access systems already in place to the greater security provided by ICPAM.

#### 2.1.1. Features of ICPAM Version 3.0

FEATURE	BENEFIT
Identiv-branded ICPAM	Continued support of current CPAM customers and new investment from dedicated developer
In place upgrades from existing customer 1.5.x systems	No need to replace current hardware or operating systems, or for configurations to change
Add support for the ICPAM EM-100 Controller	New controller with expandable feature sets provides a PAC system that can grow incrementally and eliminates the need for costly hardware updates to take advantage of new features
Support for both CPAM Gateway and ICPAM EM-100 Controller	No need to replace current controllers, and add new ones with same interface
Use existing network for power delivery to Controllers	Since controllers are powered through the network via PoE, there is no need to run separate power connections
Continue integration with Cisco products	Able to integrate with Cisco VSM and VoIP products to provide total access, a single point of security, at almost any distance from the door; Will also integrate with future Cisco-based security products
Add support for Exit Card Reader Module	Extends the capability of current EM-100 Controllers to connect Exit Reader Modules for access control auditing
Add support for Anti-Passback	Prevents a credential holder from passing their credential back to another user to gain access to the same secured/controlled area
URL Triggers	Ability to invoke web APIs directly from the controller up triggered by a configurable event. Contents of the web API URL or body may be static or dynamic and based on event attributes.

## 2.2. ICPAM Bundles

Each bundle of ICPAM includes the Controller, the Reader, and documentation. User/Installer must supply required network cables to connect the controller to the network and proper cables to connect the reader to the controller.

### 2.2.1. Mullion Reader Bundles and Wall Mount Reader Bundles

Supporting single factor authentication, presentation of a credential to authenticate to the reader. The Mullion and Wall Mount readers offer connectivity with legacy cabling of Wiegand, RS-485, and Ethernet RJ-45.

### 2.2.2. Keypad Reader Bundle

The TS Keypad readers allow for two factor premises entry authentication. With this enabled the user would need to present their access card and then enter their PIN to access the premises. The Keypad readers offer connectivity with legacy cabling of Wiegand, RS-485, and Ethernet RJ-45.

### 2.2.3. TS ScramblePad Readers Bundle

The TS ScramblePad® family of keypads and keypad-plus-reader products prevent access PINs from being compromised by using a key scrambling technique that is combined with unique viewing angle restrictors. An integrated contactless prox/smart card reader model enables a variety of card-plus-PIN applications.

### 2.2.4. ICPAM Bundle Options

The most common versions of the TS Readers are available in the ICPAM Bundles. When ordering the ICPAM Bundles, customers will need to make the choice of either pigtail connector or terminal connector and choose either the Wall Mount or Mullion form factor. Pigtails are designed to keep wire splices within a wall, and away from moisture when mounted outside. Terminal Strips offer a quick connect option when readers are mounted after walls are finished.

*Exhibit 1: Pigtail Connector and Terminal Connector*



All Keypad and ScramblePad readers are only available with terminal strip connectors.

---

Default configuration of the readers:

- Customer will choose between Pigtail (if available) or terminal strip when ordering
- Visual display is Local/Host LED (Red, Blue, Green) with an audio buzzer
- UID Format is UID Full bits, PIV 75 bits/PIV-I 128 bits
- Credentials are industry-standard Proximity and Identiv Secure Access Credential
- Output is Wiegand and Ethernet (Secure Auth)
- Hardware security is Tamper On

For keypad readers, only the terminal strip option is available and these will ship with 4-Bit Data (with one key buffer).

### 2.3. Software Licenses

Software licensing is determined on the number of modules being rolled out into an ICPAM deployment. **A “module”, in its simplest definition, is a door and all associated inputs, outputs, modules, and readers.** Additionally, the expansion boards that connect to MX-4 and MX-8 Controllers, Alarm Expansion Board (AEB8), and the Relay Expansion Board (REB8) each REQUIRE a software license.

#### 2.3.1. Determining the Number of Modules for the Software License Agreement

When determining the number modules that will be in an ICPAM deployment, it's important to note that Software License Agreements (SLAs) are available in packages of 8, 16, 32, 128, 512 and 1024 modules. When deciding the SLA that best suits the ICPAM deployment, consider any future module expansions to ensure the end-user is covered.

#### 2.3.2. Software e-Delivery

Instructions for accessing ICPAM software licenses will be distributed through email as part of the software e-delivery process. For this reason, it is important to have a point of contact clearly noted when submitting the order through the Cisco Commerce Workspace (CCW) ordering tool. Prior to entering your order, identify the customer contact (name, email, phone) to designate as the e-delivery recipient and include this information when completing a software license sales order.

#### 2.3.3. Software Support

Software licenses do not expire. However, an end-user's timeframe to access the latest releases and updates for ICPAM is 12 months from the original order fulfillment date. For the end-user to continue receiving access to the latest builds and releases, the end-user is required to sign up for an annual Software Support Agreement. For more information about ICPAM Support Programs, please refer to the [ICPAM Support Program Ordering Guide](#).

---

**IMPORTANT:** Current Cisco SmartNet Contracts are not applicable for ICPAM. If an end-user currently has a SmartNet contract with Cisco, please contact the Cisco Account Manager for further information and instructions.

#### 2.3.4. Additional Software Licensing for ICPAM

There are four (4) additional software licenses for ICPAM:

- The **EAI (Enterprise Data Integration) license** allows a user to connect to an external database not associated specifically with ICPAM to pull user information.
- The **HA (High Availability) license** allows the user to have two (2) ICPAM Servers with the same configuration, so one can act as a back-up of the other in case of server failure. These two servers act in an active / passive sharing a communication sync and virtual IP address. The second unit will only come online when the first unit fails.
- The **Web API license** allows for standard functionality for integration into PSIM and 3rd party solutions as well as external reporting. The Cisco IP Phone integration requires the Web API as do many other 3rd party integrations. If a customer wants to pull certain information for custom reporting outside of what ICPAM provides the Web API license is required.
- The **Badge Designer license** allows for the end user to design and customize the look of credentials and print credentials with in-house printers.

#### 2.3.5. License Enrollment

With the release of ICPAM 3.0, license enforcement is now active. When upgrading a legacy CPAM deployment, upgrading from ICPAM 2.X or when spec'ing a new deployment, it is important to keep licensing requirements in mind. Please visit the [ICPAM 3.0 Licensing Activation Quick Start Guide](#) or [ICPAM 3.0 Software Licensing FAQs](#) for more information.

#### 2.4. Optional TS Reader Configuration Choices Available

The most common versions of the TS Readers are available on the Cisco solutions plus price list. These variants should cover over 90% of customer requirements. For those not covered by the standard configurations, Identiv can provide a customized option of the TS Reader. Options include connector type (terminal strip or pigtail), LED and buzzer, UID Formatting, credential format, output type, physical security of the reader, and bit length for keypad. Please contact Identiv to specify non-standard models.

### 3. ICPAM Compliance and Export Regulations

The ICPAM EM-100 Controller and Exit Reader Module comply with the following certification for electrical, emissions and environmental compliance:

- FCC, Part 15, class B digital device
- UL 294

- 
- CE, compliance with the essential requirements and other relevant portions of the Directive RED 2014/53/EU
  - IC, Industry Canada license-exempt RSS standard(s)
  - NCC, Taiwan
  - EAC, Customs Union
  - UkrSEPRO, Ukraine
  - RoHS2, Reduction of Hazardous Substances
  - REACH, Registration, Evaluation, Authorization and Restriction of Chemicals

Mx Controllers comply with the following certifications for electrical, emissions, and environmental compliance and export regulations:

- FCC, Part 15, class B digital device
- UL 294
- UL1076
- CE, compliance with the essential requirements and other relevant portions of the Directive RED 2014/53/EU
- EAC, Customs Union
- UkrSEPRO, Ukraine
- RoHS2, Reduction of Hazardous Substances
- REACH, Registration, Evaluation, Authorization and Restriction of Chemicals

The TS Readers comply with the following certification for electrical, emissions, and environmental compliance:

- FCC, Part 15, class B digital device
- UL 294
- CE, compliance with the essential requirements and other relevant portions of the Directive RED 2014/53/EU
- IC, Industry Canada license-exempt RSS standard(s)
- C-Tick, Australia and New Zealand
- RoHS2, Reduction of Hazardous Substances
- REACH, Registration, Evaluation, Authorization and Restriction of Chemicals



Exhibit 2: Typical Bundle Deployment

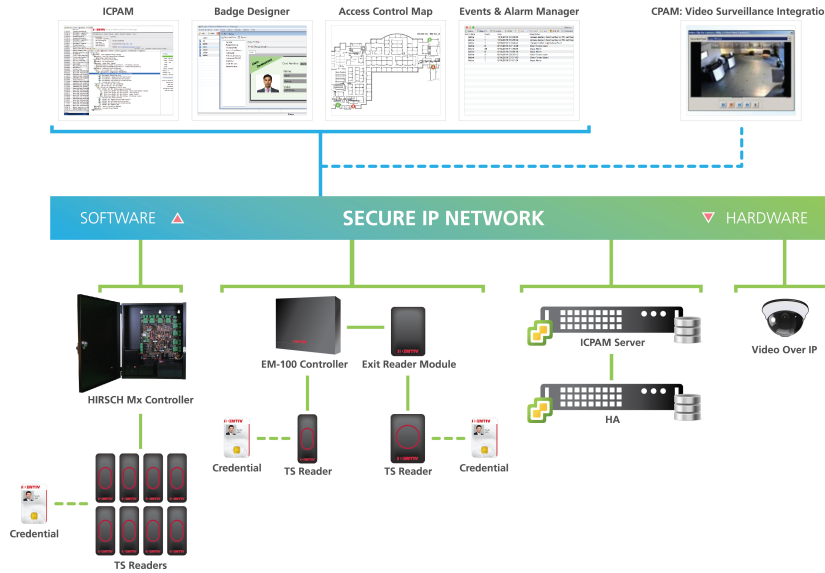
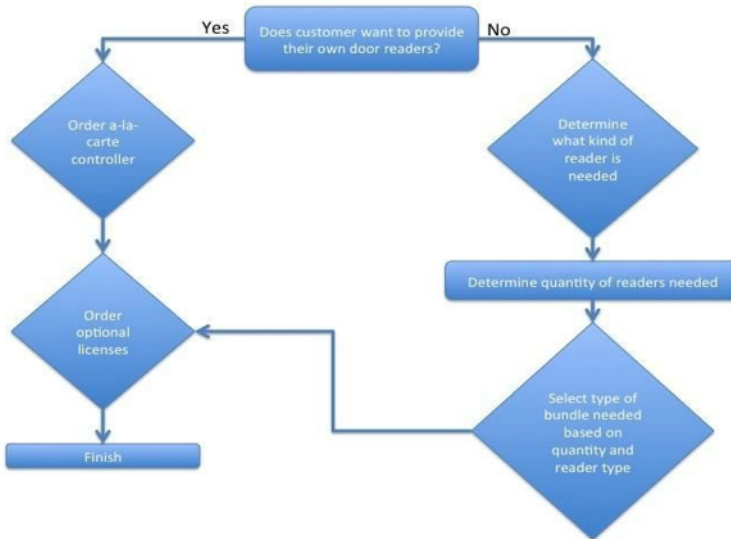


Exhibit 3: Ordering Flowchart



**Initial Questions:**

Prior to ordering an ICPAM system, you need to ask a handful of questions to verify that the default ordering process will work or if you need to refer to a supplemental document to make sure you are obtaining the correct equipment. Refer to the [CPAM to ICPAM Migration Checklist](#).

These questions are as follows:

**Question 1:** Is there a current system that has dual frequency credentials and is the customer planning on using those credentials with this new equipment?

- If the answer is **NO**, then proceed.
- If it is **YES**, then the default Readers in this order guide will not be appropriate and we need to refer to the [TS Reader Ordering Guide](#) to obtain the correct readers.

**Question 2:** Does the customer currently have unique credentials that are outside of the common credentials recommended in Table 5 of this guide? If the answer is yes, then contacting [cisco@identiv.com](mailto:cisco@identiv.com) would be required to verify that the legacy cards will work along with any new cards that are purchased and to also make sure that an appropriate firmware version for the readers installed.

**Note:** Identiv offers a number of credentials not currently on the Cisco solutions plus price list, including a credential for both logical and physical access, created through a cloud based service. If the customer desires a different type of credential, please contact Identiv directly.

#### 4. ICPAM Ordering Steps

1. [Evaluate the number of doors, gates, or barriers in the physical deployment](#)
2. [Determine what kind of hardware will best suit the customer's environment type](#)
3. [Select the type of reader for the deployment](#)
4. [Select the Software License Agreement \(SLA\) that best matches the ICPAM solution](#)
5. [Select additional licenses for High Availability or Enterprise Data Integration \(optional\)](#)
6. [Select the appropriate bundle for the deployment](#)
7. [Migrating an existing CPAM customer to ICPAM](#)
8. [Building the Bill of Materials \(BOM\)](#)
9. [FAQ](#)

**Step 1:** Evaluate the number of doors, gates, or barriers in the physical deployment.

The number of sensor endpoints in a deployment will traditionally refer to a door for physical entry. For example, a building with 30 doors that require physical access will have 30 sensor endpoints. The best way to calculate the number of sensor endpoints is to count the number of locations that a physical access reader will be required.

**Step 2:** Determine what kind of hardware will best suit the customer's environment type.

**Single-Door, Edge Controller:** The EM-100 Network Controller Power over Ethernet (PoE) Network Controller is an Edge device designed for installation at the door and provides both data and power connections for a single reader.

**Multi-Door, Centralized Controller:** The Mx-4 and Mx-8 Multi-Door controllers are fully supervised centralized controllers designed as a solution for deployments that require flexibility and scalability of design. The Mx-4 and Mx-8 also support expansion boards, granting system integrators even greater customization options in varying environments.

CISCO PID	DESCRIPTION
ICPAM-EM100-HW	PoE controller and maintenance and support for 12 months
ICPAM-MX-4	4 Door Controller with 4 Line Modules
ICPAM MX-8	8 Door Controller with 8 Line Modules

**Step 3:** Select the type of reader for the deployment.

Based on customer needs, they will require different types of physical access readers. The following reader options are available.

**Table 1. ICPAM TS Reader Options**

READER TYPE	USE CASE/BENEFITS
Mullion Reader	Door mullion mounting
Wall Mount Reader	Standard electrical box or wall mounting
Keypad Reader	Two-factor authentication (card and PIN)
ScramblePad Reader	High security two-factor authentication (card and PIN)

Exhibit 4: ICPAM TS Reader Family



In addition to selecting the type of reader, you must configure the type of connection. Below is a picture of the options:

Exhibit 5: Pigtail Connector (below left) and Terminal Connection (below right)



**Step 4:** Select the Software License Agreement (SLA) that best matches the ICPAM solution.

When rolling out an ICPAM solution, it is now required to determine the number of modules that will be deployed in the environment. A **“module”** is defined as a door and all associated input, output, and additional modules that are connected. In addition, the expansion boards that connect to the MX-4 and MX-8, Alarm Expansion Board (AEB8), and Relay Expansion Board (REB8) are each considered modules and REQUIRE a license. The table below defines the number of modules per SLA:

**Table 2. ICPAM Software License Agreements**

CISCO PID	PRODUCT CATEGORY	SKU DESCRIPTION
L-ICPAM-M8	ICPAM Software License – up to 8 Modules	ICPAM software License including first year technical support, maintenance, new releases and updates - 8 Module License
L-ICPAM-M16	ICPAM Software License – up to 16 Modules	ICPAM software License including first year technical support, maintenance, new releases and updates - 16 Module License
L-ICPAM-M32	ICPAM Software License – up to 32 Modules	ICPAM software License including first year technical support, maintenance, new releases and updates - 32 Module License
L-ICPAM-M128	ICPAM Software License – up to 128 Modules	ICPAM software License including first year technical support, maintenance, new releases and updates - 128 Module License
L-ICPAM-M512	ICPAM Software License – up to 512 Modules	ICPAM software License including first year technical support, maintenance, new releases and updates - 512 Module License
L-ICPAM-M1024	ICPAM Software License – up to 1024 Modules	ICPAM software License including first year technical support, maintenance, new releases and updates - 1024 Module License

**Step 5: (Optional)** Select additional licenses for High Availability, Enterprise Data Integration, Web API and Badge Designer.

**Table 3. ICPAM Additional Software Licenses**

CISCO PID	DESCRIPTION
ICPAM-HA=	ICPAM Server High Availability
ICPAM-EAI=	Enterprise Data Integration
ICPAM-WAPI	Web API
ICPAM-BD	Badge Designer

For specific questions about how to receive an auto-generated license URL for HA, EAI, Web API and BD please contact Identiv at [cisco@identiv.com](mailto:cisco@identiv.com).

**Step 6:** Select the appropriate hardware or bundle for the deployment.

All bundles include PoE controller, reader, and one year of Identiv support.

**Table 4. Bundle and Hardware Options**

<b>EM-100 Controller and TS Reader Hardware Bundles</b>			
<b>CISCO PID</b>	<b>CISCO OPTION CLASS</b>	<b>PRODUCT CATEGORY</b>	<b>PRODUCT DESCRIPTION</b>
ICPAM-WALL-HW-BDP=	N/A	Identiv EM-100 Wall Mount Bundle with TS Reader pigtail connector	Bundle of ICPAM EM-100 PoE controller, TS Wall Mount Reader with pigtail connector, includes 12 months' hardware maintenance and support
ICPAM-WALL-HW-BDT=	N/A	Identiv EM-100 Wall Mount Bundle with TS Reader terminal connector	Bundle of ICPAM EM-100 PoE controller, TS Wall Mount Reader with terminal connector, includes 12 months' hardware maintenance and support
ICPAM-MULL-HW-BDP=	N/A	Identiv EM-100 Mullion Mount Bundle with TS Reader pigtail connector	Bundle of ICPAM EM-100 PoE controller, TS Mullion Reader with pigtail connector, includes 12 months' maintenance and support
ICPAM-MULL-HW-BDT=	N/A	Identiv EM-100 Mullion Mount Bundle with TS Reader terminal connector	Bundle of ICPAM EM-100 PoE controller, software, TS Mullion Reader with terminal connector, includes 12 months' maintenance and support
ICPAM-WALL-NN-BDL	N/A	Identiv EM-100 Wall Mount Bundle with non-network Reader with pigtail connector	Bundle of ICPAM EM-100 PoE controller, Migration uTrust TS wall mount reader with pigtail connector, includes 12 months maintenance and support
ICPAM-MULL-NN-BDL	N/A	Identiv EM-100 Mullion Mount Bundle with non-network Reader with pigtail connector	Bundle of ICPAM EM-100 PoE controller, TS Migration Mullion Reader with pigtail connector, includes 12 months maintenance and support
ICPAM-KBD-HW-BDL	N/A	Identiv EM-100 Keypad Mount Bundle with TS Reader terminal connector	Bundle of ICPAM EM-100 PoE controller, software, TS Keypad Reader with terminal connector, includes 12 months' maintenance and support
ICPAM-SP-HW-BDL	N/A	Identiv EM-100 ScramblePad Bundle with TS Reader terminal connector	Bundle of ICPAM EM-100 PoE controller, software, TS ScramblePad Reader with terminal connector, includes 12 months' maintenance and support

## Touch Secure (TS) Readers

CISCO PID	CISCO OPTION CLASS	PRODUCT CATEGORY	PRODUCT DESCRIPTION
ICPAM-WALL-RDR-M	ICPAM-WALL-RDR-MP	TS Physical Access Readers - Wall Mount Migration with pigtail connector	Wall mount sized multi-frequency, connected door reader with pigtail connector, Wiegand and RS-485 (no network), EAL 5+ key storage, upgradeable
	ICPAM-WALL-RDR-MT	TS Physical Access Readers - Wall Mount Migration with terminal connector	Wall mount sized multi-frequency, connected door reader with terminal connector, Wiegand and RS-485 (no network), EAL 5+ key storage, upgradeable
ICPAM-MULL-RDR-M	ICPAM-MULL-RDR-MP	TS Physical Access Readers - Mullion Migration with pigtail connector	Mullion sized multi-frequency, connected door reader with pigtail connector, Wiegand and RS-485 (no network), EAL 5+ key storage, upgradeable
	ICPAM-MULL-RDR-MT	TS Physical Access Readers - Mullion Migration	Mullion sized multi-frequency, connected door reader with terminal connector, Wiegand and RS-485 (no network), EAL 5+ key storage, upgradeable
ICPAM-WALL-RDR	ICPAM-WALL-ROP	TS Physical Access Readers - Wall Mount Network with pigtail connector	Wall mount sized multi-frequency, connected door reader with pigtail connector - Wiegand, RS-485, and network (PoE), EAL 5+ key storage, upgradeable

ICPAM-WALL-RDR	ICPAM-WALL-ROT	TS Physical Access Readers - Wall Mount Network with terminal connector	Wall mount sized multi-frequency, connected door reader with terminal connector - Wiegand, RS-485, and network (PoE), EAL 5+ key storage, upgradeable
ICPAM-MULL-RDR	ICPAM-MULL-ROP	TS Physical Access Readers - Mullion Network with pigtail connector	Door frame sized multi-frequency, connected door reader with pigtail connector – Wiegand, RS-485, and network (PoE), EAL 5+ key storage, upgradeable
	ICPAM-RDR-ROT	TS Physical Access Readers - Mullion Network with terminal connector	Door frame sized multi-frequency, connected door reader with terminal connector – Wiegand, RS-485, and network (PoE), EAL 5+ key storage, upgradeable
ICPAM-SP-RDR=	N/A	TS Physical Access Readers - ScramblePad Network with terminal connector	Scrambling keypad, multi-frequency, connected door reader with terminal connector - Wiegand, RS-485, and network (PoE), EAL 6+ key storage, upgradeable
ICPAM-KBD-RDR=	N/A	TS Physical Access Readers - Keypad Network with terminal connector	Keypad wall mount sized multi-frequency, connected door reader with terminal connector - Wiegand, RS-485, and network (PoE), EAL 5+ key storage, upgradeable

**EM-100 Controller and EM-100 Module Hardware**

CISCO PID	CISCO OPTION CLASS	PRODUCT CATEGORY	PRODUCT DESCRIPTION
ICPAM-EM100-HW	N/A	Identiv ICPAM EM-100 Controller	Identiv ICPAM EM-100 Controller, includes 12 months' maintenance
ICPAM-EM100-EXT	N/A	Exit Reader Module for EM-100 Controller	Identiv ICPAM Exit Reader Module



## Mx Controllers and Accessory Boards

CISCO PID	CISCO OPTION CLASS	PRODUCT CATEGORY	PRODUCT DESCRIPTION
ICPAM-MX-4	N/A	MX Controller 4 Door	Identiv MX-4 Controller - 4 Door, with SNIB3 and Four (4) Line Module 3 Accessory (MELM3)
ICPAM-MX-8	N/A	MX Controller 8 Door	Identiv MX-8 Controller - 4 Door, with SNIB3 and Four (8) Line Module 3 Accessory (MELM3)
ICPAM-MX-UPG	N/A	MX Controller Upgrade Kit, 4 to 8 Door	Upgrade Kit - MX-4 to MX-8 includes extra connectors, CCMx dongle and four Module 3 Accessory (MELM3)
ICPAM-MX-ALM8	N/A	MX Controller Accessory, Alarm Expansion	Alarm Expansion Board - 8 Inputs. Eight Line Module accessory included (MELM1)
ICPAM-MX-RLY8	N/A	MX Controller Accessory, Relay Expansion	Relay Expansion Board - 8 Relays
ICPAM-MX-MEB64	N/A	MX Controller Accessory, Memory Expansion	Memory Expansion Board - Code/Event (64). Adds up to an additional 64000 credentials
ICPAM-MX-MEB128	N/A	MX Controller Accessory, Memory Expansion	Memory Expansion Board - Code/Event (128). Adds up to an additional 128,000 credentials
ICPAM-MX-MB	N/A	MATCH2 Board Assembly	MATCH2 Reader Interface Assembly - Includes Match Board and assembly

**IMPORTANT MX DESIGN NOTE:** When designing a system with Mx Controllers, if the number of users in a deployment exceeds or will exceed 4,000 users with 1 access policy or 2,000 users with multiple access policies, it is **REQUIRED** to include a memory MEB64 or MEB128 expansion board in the Bill of Materials. Only One (1) Memory Expansion board can be connected to an Mx Controller at any time.

**Note:** If you have cards with both high and low frequencies, you need to refer to the TS Reader Ordering Guide to purchase an appropriate reader for your configuration.

**Cisco Commerce Workspace (CCW) Note:** Some products carry the NPH designator. NPH means *New Product Hold*. When an item is on New Product Hold, the tool will show that the item is on "NPH" until a given date. These new Cisco offerings will not schedule when

ordered; instead they will go on “New Product Hold”. The release date signifies when Cisco can start to schedule and calculate lead time for the product. Please contact your Identiv Channel Manager or Identiv Certified Partner for further information about the product.

**Table 5: Credential Parts Numbers**

CISCO PID	MINIMUM ORDER QUANTITY	PRODUCT	DESCRIPTION
ICPAM-PROX-CRD=	100	125 KHz Proximity - Card Credential	125 KHz Proximity ISO Card (PVC) - all major formats, legacy credential for physical access
ICPAM-PROX-KEY=	100	125 KHz Proximity - Key Fob	125 KHz Proximity Key Fob - all major formats, legacy credential for physical access
ICPAM-PROX-STK=	100	125 KHz - Proximity Sticker	125 KHz Proximity Round Sticker - all major formats, legacy credential for physical access

All bundles include the first year of support and maintenance.

For additional information about extended support and maintenance programs, please refer to the [ICPAM Service Support Programs Ordering Guide](#).

**Note:** Initially, some bundles may have a list price of \$0. You will need to make an additional choice such as choosing either a terminal or pigtail connection with a TS Reader to cause the system to update the price information.

**Step 7: Migrating an existing CPAM customer to ICPAM**

**Determine whether the deployment is in an existing CPAM environment or in a new ICPAM environment.**

- If it is a **NEW** ICPAM environment, then continue.
- If it is an **EXISTING** CPAM environment, then skip to **Step 8**.

If customer is an existing CPAM customer, they must first migrate their existing CPAM software to ICPAM software. To upgrade to ICPAM, the current CPAM software must be on the latest version, CPAM 1.5.3. After one of the most recent versions of CPAM is installed, the customer goes directly to Identiv to upgrade to ICPAM software. For information about migrating from 1.5.3 to the latest version of ICPAM, please review the [ICPAM Migration Guide](#). This upgrade is software only, and customer must purchase

support through Identiv separately. The ICPAM support contract must be purchased for a customer to receive future upgrades of the ICPAM software. Contact Identiv at [cisco@identiv.com](mailto:cisco@identiv.com) for support options that Identiv offers.

For customers who chose to upgrade from CPAM to ICPAM, they will need to contact Cisco support team to initiate the formal process for a credit back for the termination of their Smartnet contract. The credit back is subject to approval from Cisco support team. Cisco will continue to provide Level 1 hardware support responsibility for CPAM gateway hardware for remainder life of product. This means that customer keeps their service contract on hardware, if purchased. The customer will continue to call Cisco for issues related to Cisco gateway, and support remains the same for hardware components even when customer migrates to ICPAM software.

### Step 8: Building the Build of Materials (BOM)

#### Sample 1: Build of Materials (BOM)

Sample BOM for Bundle for a new ICPAM Deployment that has 30 doors and requires high availability and enterprise data integration. This specific BOM is for a customer that requests a wall reader.

PART NUMBER	DESCRIPTION	QUANTITY NEEDED
ICPAM-WALL-HW-BDP=	PoE controller with pigtail connector, wall reader, and one year support	30
L-ICPAM-M32	ICPAM Software License – up to 32 Modules	1
ICPAM-HA=	High Availability License	1
ICPAM-EAI=	Enterprise Data Integration License	1

#### Sample 2: Build of Materials (BOM)

Sample BOM for a-la-carte in a new ICPAM Deployment that has 20 doors. The customer has opted to provide his or her own readers. This customer requires an enterprise data integration license.

PART NUMBER	DESCRIPTION	QUANTITY
ICPAM-EM100-HW	PoE controller and one year support	20
L-ICPAM-M32	ICPAM Software License – up to 32 Modules	1

ICPAM-EAI=	Enterprise Data Integration	1
------------	-----------------------------	---

### Sample 3: Build of Materials (BOM)

Sample BOM for Bundle a CPAM Deployment that has 15 doors. The customer requires enterprise data integration. This customer first upgraded their existing CPAM software to ICPAM software. Additional software support must be purchased directly through Identiv.

PART NUMBER	DESCRIPTION	QUANTITY
ICPAM-MULL-HW-BDT=	PoE controller with Terminal connector, mullion reader, and one year support	15
L-ICPAM-M16	ICPAM Software License – up to 16 Modules	1
ICPAM-EAI=	Enterprise Data Integration License	1

### Sample 4: Build of Materials (BOM)

Sample BOM for a-la-carte CPAM Deployment that has 40 doors. The customer requires both enterprise data integration and high availability. This customer first upgraded their existing CPAM software to ICPAM software. Additional software support must be purchased directly through Identiv.

PART NUMBER	DESCRIPTION	QUANTITY
ICPAM-EM100-HW	PoE controller, and one year support	40
L-ICPAM-M8	ICPAM Software License – up to 8 Modules	1
L-ICPAM-M32	ICPAM Software License – up to 32 Modules	1
ICPAM-EAI=	Enterprise Data Integration License	1
ICPAM-HA=	High Availability License	1

### Sample 5: Build of Materials (BOM)

Sample BOM for an ICPAM deployment with Mx Controllers in a 13-door environment. The customer requires a centralized system with 9 readers mounted on walls and 4 readers on mullions, with 2 readers being connected outside of the max transmission distance that

is supported by Wiegand. They will also need to connect 10 door position and glass-break sensors that cannot be supported by the Mx Controller base board.

PART NUMBER	DESCRIPTION	QUANTITY
ICPAM-MX-8	MX Controller 8 door and one year support	2
ICPAM-MX-ALM8	MX Controller Accessory – Alarm Expansion Board	2
ICPAM-MX-REB8	MX Controller Accessory – Relay Expansion Board	1
ICPAM-MX-MB	MATCH Board Assembly	2
ICPAM-WALL-RDR-MP	TS Physical Access Readers - Wall Mount Migration with pigtail connector	9
ICPAM-MULL-RDR-MP	TS Physical Access Readers - Mullion Mount Migration with pigtail connector	4
L-ICPAM-M16	ICPAM Software License – up to 16 modules	1

### Step 9: Frequently Asked Questions

The ICPAM FAQ is located at the bottom of the following webpage:  
[ICPAM Frequently Asked Questions](#)

### For Sales Assistance

For more information about quoting and deploying an ICPAM system, please contact the Identiv Channel Sales team at [cisco@identiv.com](mailto:cisco@identiv.com).

### For More Information

Visit [identiv.com/icpam](http://identiv.com/icpam) or contact a Certified Cisco Technology Partner for more information about Identiv Connected Physical Access Manager (ICPAM).

For additional content and documentation, please visit [support.identiv.com/icpam](http://support.identiv.com/icpam).