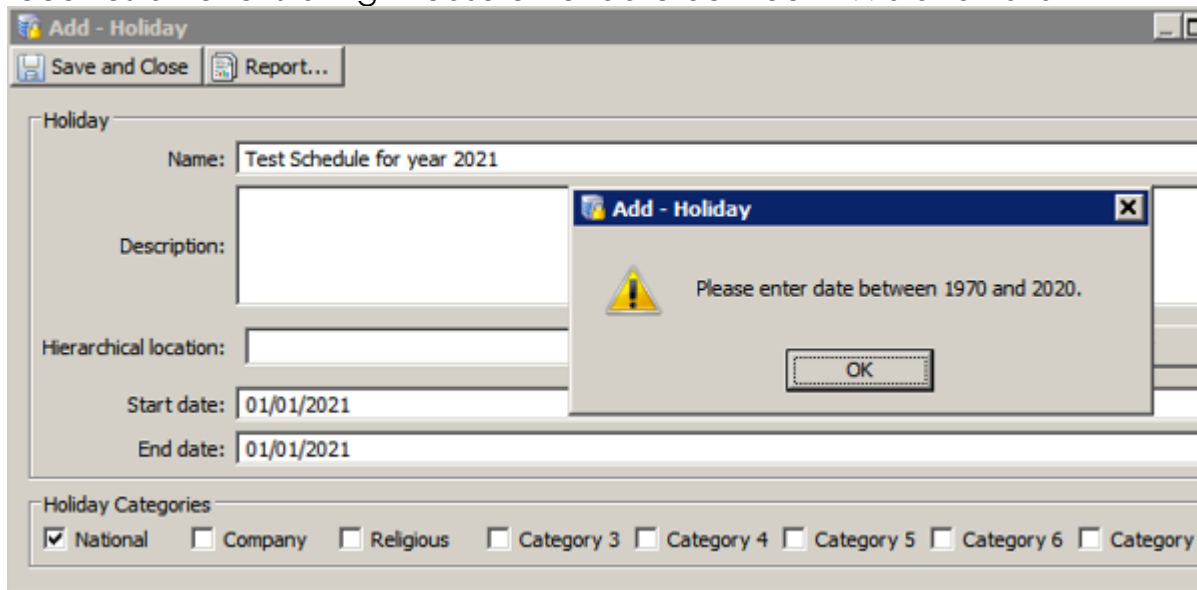


This document is designed to explain how to configure ICPAM to work with Cisco gateways exactly like a regular holiday schedule.

“**ICPAM Client fix**” section shows you how to fix the holiday prompt error on the ICPAM client. However, this does NOT include a fix on the Cisco Gateway controller.

## ICPAM Client fix:

When the ICPAM administrator is attempting to add holidays for 2021 and receives an error stating "Please enter date between 1970 and 2020"



## **Solution:**

The jar files are at the following link:

Jar file (for ICPAM v3.1): <https://identiv.sharefile.com/d-saff7201fc4f42009>

Jar file (for ICPAM v3.2): <https://identiv.sharefile.com/d-sba54ddf6cc546efb>

Jar file (for ICPAM v3.3.0): <https://identiv.sharefile.com/d-s2ddee2e6f6641c58>

Jar file (for ICPAM v3.3.1): <https://identiv.sharefile.com/d-s0fdee39eba9499d8>

- Download the jar file from link above based on ICPAM version you are running
- Logout from the ICPAM client
- Go to the ICPAM client install directory (**For example: C drive; Program files (x86); Identiv; ICPAM; lib\**)
- Copy the jar file [**cpsm-vxacgw.jar**] into that directory
- Log back into ICPAM Client
- Now you should be able to add holiday beyond 2020

## Gateway Workaround Options:

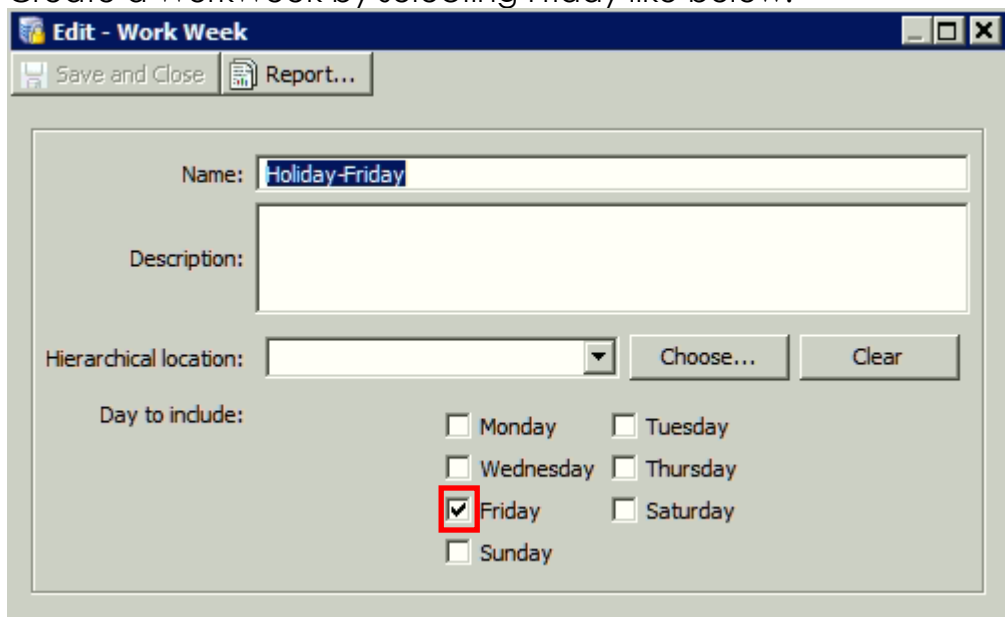
The Cisco GW itself does not support the holiday schedules for 2021 and beyond; therefore, we have created two workaround options. The section below will explain both workarounds. Choose whatever workaround option works best for you and your system.

### Workaround 1 – Using Workweek

This workaround requires the holiday configuration be done on the week of the holiday.

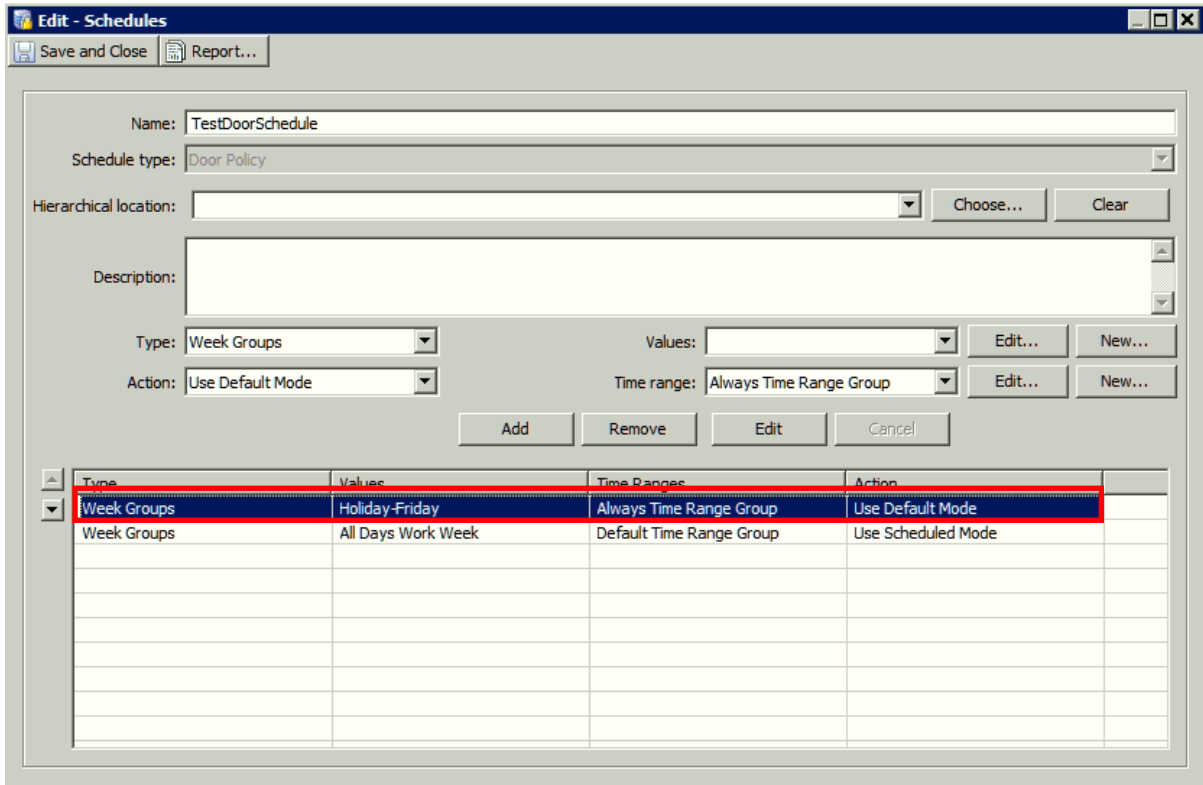
**For example**, if a holiday falls on a Friday, you would have to make the changes before Friday of that week.

Create a WorkWeek by selecting Friday like below.



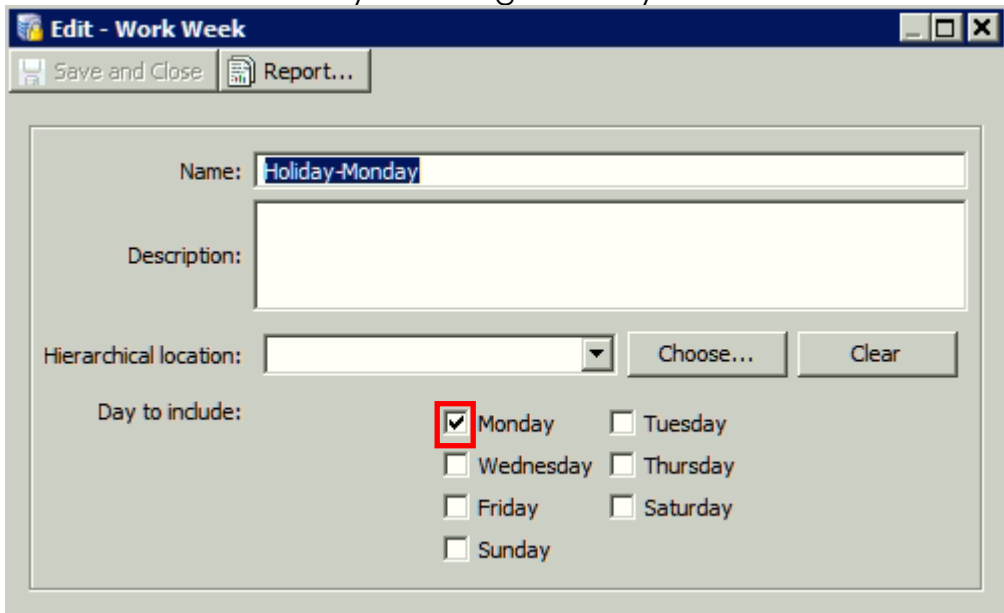
The screenshot shows a window titled "Edit - Work Week" with a toolbar containing "Save and Close" and "Report...". The main area has a "Name:" field with "Holiday-Friday" entered. Below it is a "Description:" text area. A "Hierarchical location:" dropdown menu is followed by "Choose..." and "Clear" buttons. The "Day to include:" section contains seven checkboxes: Monday, Tuesday, Wednesday, Thursday, Friday (checked and highlighted with a red box), Saturday, and Sunday.

Add this WorkWeek entry at the top to the existing door schedule by selecting the action as **“Use Default Mode”** like below.



**Another example**, if a holiday falls on a Monday, you would have to make the changes the prior week after Monday.

Create a WorkWeek by selecting Monday like below.



Add this WorkWeek at the top to the existing door schedule by selecting the action as **“Use Default Mode”** like below.

| Type        | Values             | Time Ranges              | Action             |
|-------------|--------------------|--------------------------|--------------------|
| Week Groups | Holiday-Monday     | Always Time Range Group  | Use Default Mode   |
| Week Groups | All Days Work Week | Default Time Range Group | Use Scheduled Mode |
|             |                    |                          |                    |
|             |                    |                          |                    |
|             |                    |                          |                    |
|             |                    |                          |                    |
|             |                    |                          |                    |
|             |                    |                          |                    |
|             |                    |                          |                    |

The last step is to apply the configuration changes to the Gateways that manages the door schedules you are working with.

Navigate to the Hardware Tree, right click on the Gateway, and then left click on Apply Configuration Changes.

### **IMPORTANT:**

**Make sure to remove the WorkWeek entry from the Door Schedule when the holiday is over and then apply the configuration changes to the Gateways that manages the door schedules you are working with.**

### **Note:**

You can also define individual days and then group all the days on the calendar as a TimeEntryCollection – US Days Calendar. This can then be used in a schedule entry with **“Use Default Mode”**.

## Workaround 2 – Using Global I/O

### Precondition:

- Gateway must be communicating with ICPAM

### Steps:

1. Define individual holidays for 2021 and group all the holidays using a Schedule
2. Create a Global I/O to lock the cisco doors using the “Set Door Mode Lock” command
3. Create another Global I/O to return the doors to default mode using the “Reset Door Mode” command

### Defining the 3 steps:

#### 1<sup>st</sup> step

Define individual holidays for 2021 like below.

| Name                             | Description | Start Date | End Date   |
|----------------------------------|-------------|------------|------------|
| Emergency Lock Down MX - 1 Bld 2 |             | 02/06/2020 | 02/06/2020 |
| Emergency Lock Down MX - 8 Bld 1 |             | 02/11/2020 | 02/11/2020 |
| Holiday 1                        |             | 03/17/2020 | 03/17/2020 |
| Holiday 2                        |             | 03/19/2020 | 03/19/2020 |
| Holiday 3                        |             | 03/20/2020 | 03/20/2020 |
| HolidayYear2021                  |             | 01/01/2020 | 01/01/2020 |
| Test Schedule for year 2021      |             | 01/13/2020 | 01/13/2020 |

**NOTE: These Holiday entries MUST not be programmed in the “Gateway” Access or Door Policy schedules.**

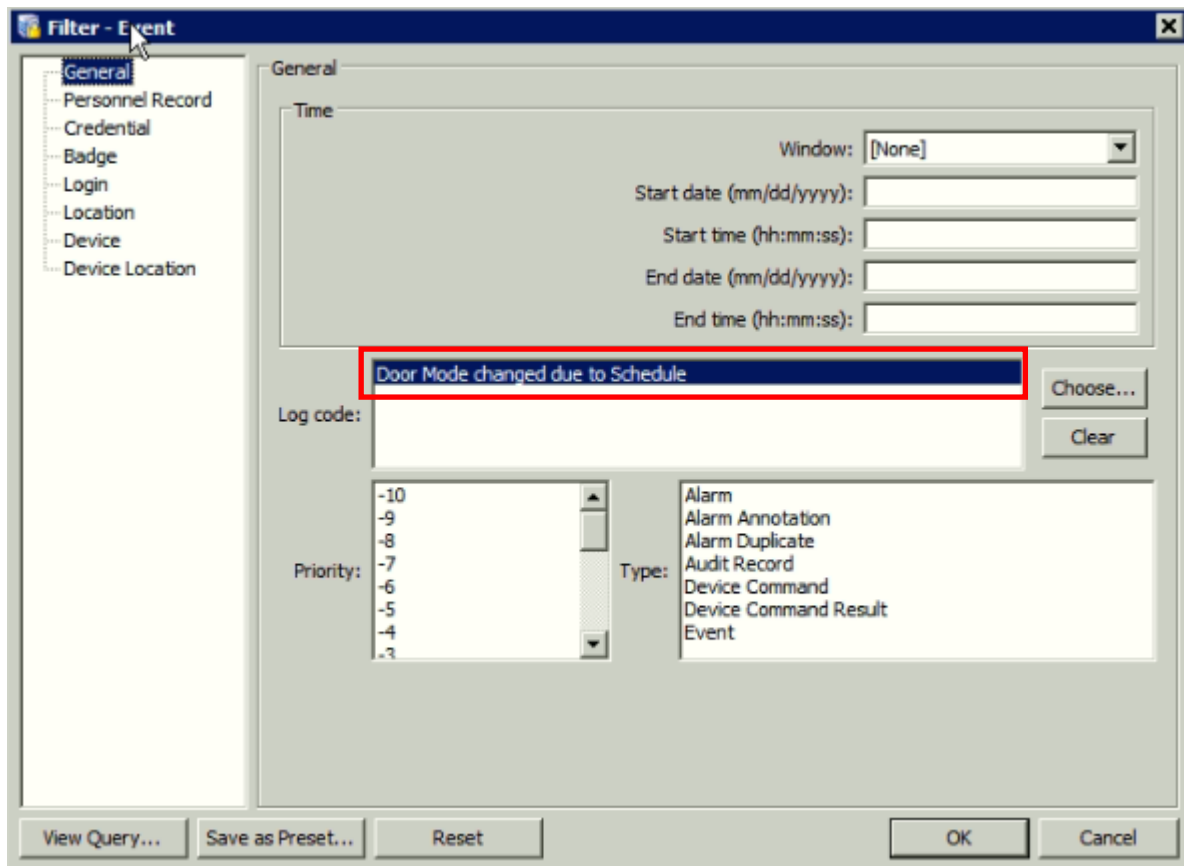
Then group all the holidays using a Schedule (see below).

For **Schedule Type** select **Event Policy**.

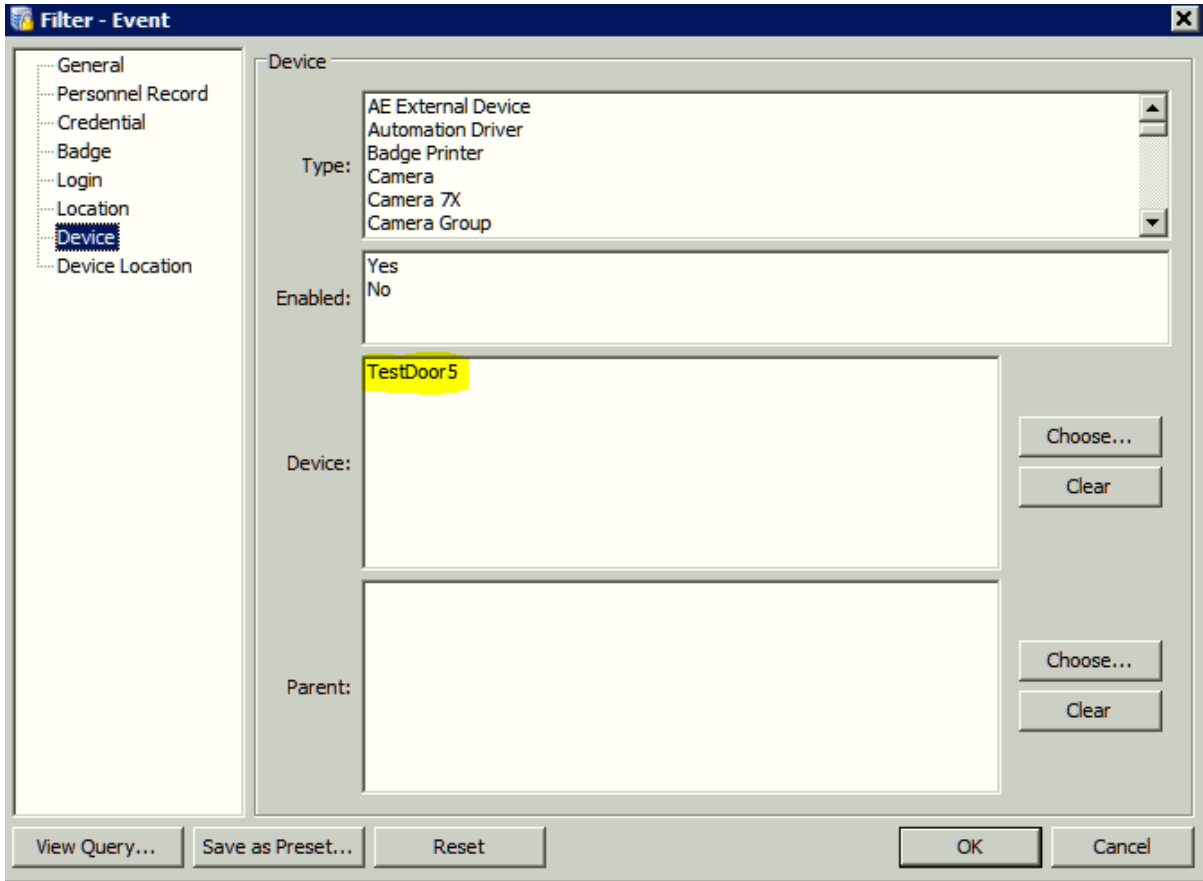
| Type     | Values    | Time Ranges             | Action |
|----------|-----------|-------------------------|--------|
| Holidays | Holiday 1 | Always Time Range Group | None   |
| Holidays | Holiday 2 | Always Time Range Group | None   |
| Holidays | Holiday 3 | Always Time Range Group | None   |

## 2<sup>nd</sup> step

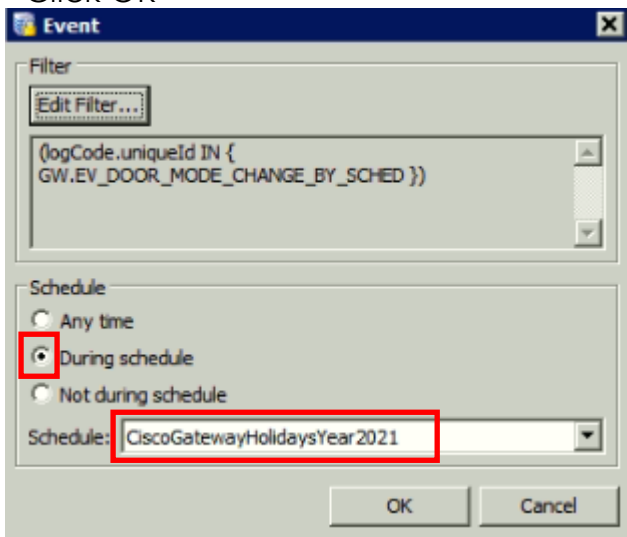
- Go to 'Events & Alarms' > 'Global I/O' > 'Add' and Enter Name
- In the **Trigger** field choose 'New' > Type = Event
- Go to Edit filter
- Under General go to Choose
- Scroll down to "**Cisco Door Events**" and expand
- Select **Door Mode changed due to Schedule**  
(**GW.EV\_DOOR\_MODE\_CHANGE\_BY\_SCHED**) – Click OK



- Select the Devices tab (in the left pane).
  - Select only one door that is part of a door schedule.**
- Click OK

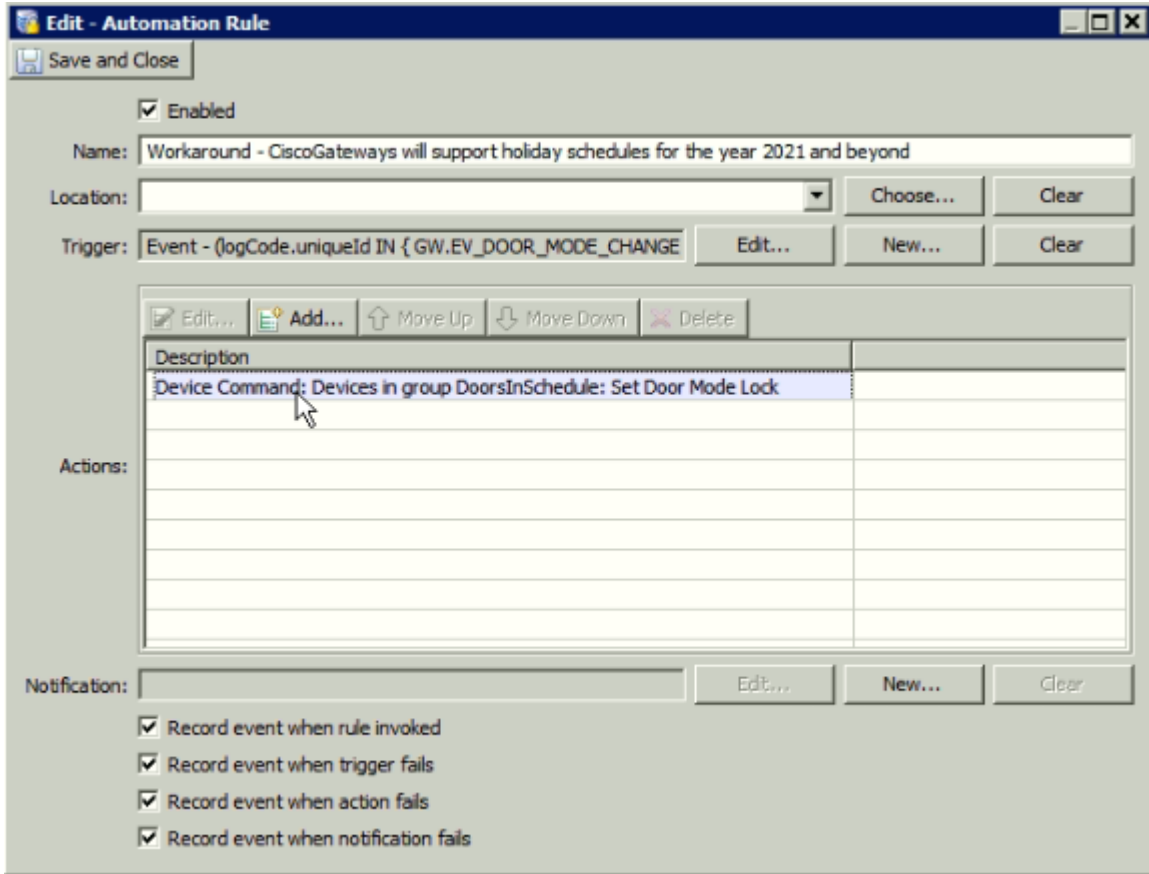


- In the **Schedule** field: Select the radio button (**During Schedule**)
- Select the event policy time schedule you created **in the step 1**
- Click OK



- In the **Actions** field: Click on Add -- Select Device command – Click OK
- In option select "multiple (by filter) of type" and select type "door". Click filter and select the doors for which commands needs to be issued. In action select **"Set Door Mode Lock"**
- Save and Close; Save and Close

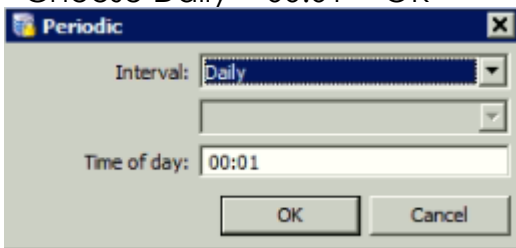




**Note:** You can even optimize this by using a door group here. That is, create a device group with all doors to be locked in one device group. Then use "Multiple (by group) of type" then choose type door and select the group.

### 3rd Step:

- Go to 'Events & Alarms' > 'Global I/O' > 'Add' and Enter Name
- In the **Trigger** field choose 'New' > Type = Periodic
- Choose Daily > 00:01 > OK



- In the **Actions** field: Click on Add -- Select Device command – Click OK  
In option select "multiple (by filter) of type" and select type "door". Click filter and select the doors for which commands needs to issue. In action select **"Reset Door Mode"**
- Save and Close; Save and Close

**Edit - Automation Rule**

Save and Close

Enabled

Name:

Location:  Choose... Clear

Trigger:  Edit... New... Clear

Actions:

| Description   |   |
|---|---|
| <input checked="" type="checkbox"/> Edit...                       | <input checked="" type="checkbox"/> Add...    |
| <input checked="" type="checkbox"/> Move Up                       | <input checked="" type="checkbox"/> Move Down |
| <input checked="" type="checkbox"/> Delete                        |   |
| Device Command: Devices in group DoorsInSchedule: Reset Door Mode |   |
|   |   |
|   |   |
|   |   |
|   |   |
|   |   |
|   |   |
|   |   |

Notification:  Edit... New... Clear

- Record event when rule invoked
- Record event when trigger fails
- Record event when action fails
- Record event when notification fails