



# **IDENTIVE**

## **Driver Installation Guide (Windows)**

---

AxxB & AxxL Reader Series

**Document history**

Revision	Date	Author	Description
1.0	Aug 2012	Timo Baur	- Initial version
1.1	May 2013	Timo Baur Thillai Elayaraja	- Updated for driver installer for driver V6.6 - Added uninstall information for driver V6.6 - Added balloon tip screenshots during install - Added LEGIC reader as supported devices - Separate installer for 32 & 64 bit versions of Windows XP, Vista, Server 2003, 7, 8 - Separate installer for Windows 2000 - Changed driver download - Renamed document & file name

## Contents

1. Abstract .....	4
2. Document information.....	4
3. Driver download.....	4
4. Driver installation .....	5
Step 1.....	5
Step 2.....	5
Step 3.....	6
Step 4.....	6
Step 5.....	7
Step 6.....	7
5. Driver uninstallation .....	9

## 1. Abstract

This document shows the required steps to install the virtual COM port driver (VCP) for USB versions of the following Identive readers:

- NFC/MIFARE reader devices (AxxB Reader Series)
- LEGIC reader devices (AxxL Reader Series)

## 2. Document information

The installation process shown below is exemplary for Microsoft Windows 7 (32 bit). For other Windows operating systems, the steps and the screen-shots mentioned in this document would be similar.

## 3. Driver download

Download the virtual COM port driver (VCP) for Windows XP / 2000 / Vista / 7 (32 & 64 bit) / 8 (32 & 64 bit) at **support.identive-group.com**. For WinCE 5.0/6.0 you can download the drivers here: **<http://www.silabs.com/products/mcu/Pages/USBtoUARTBridgeVCPDrivers.aspx>**

*The following setup files are available:*

CP210x_VCP_Win2K.exe	➤ Windows 2000
CP210xVCPInstaller_x86.exe	➤ Windows XP, Server 2003, Vista, 7, 8 (32 bit)
CP210xVCPInstaller_x64.exe	➤ Windows XP, Server 2003, Vista, 7, 8 (64 bit)

### **NOTE:**

Make sure that the reader device is not connected to your PC during driver installation!

## 4. Driver installation

### Step 1

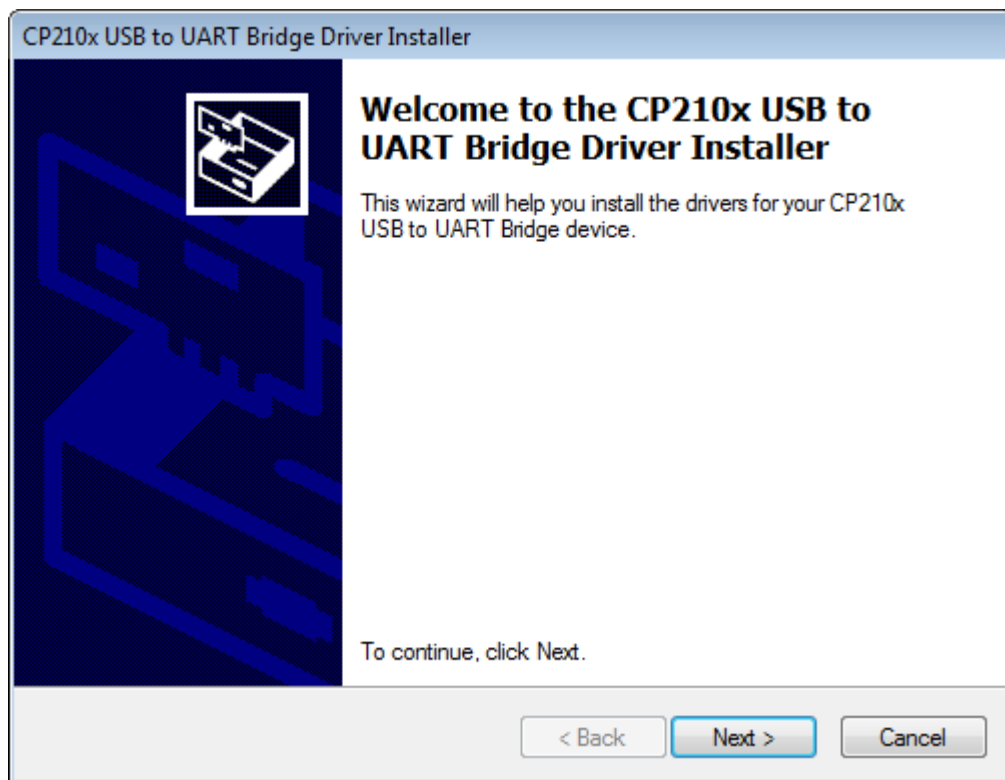
For a clean driver installation it is recommended to uninstall previous driver version. If no drivers are installed or have been uninstalled please double click the downloaded file (see chapter 3):



CP210xVCPInstaller...

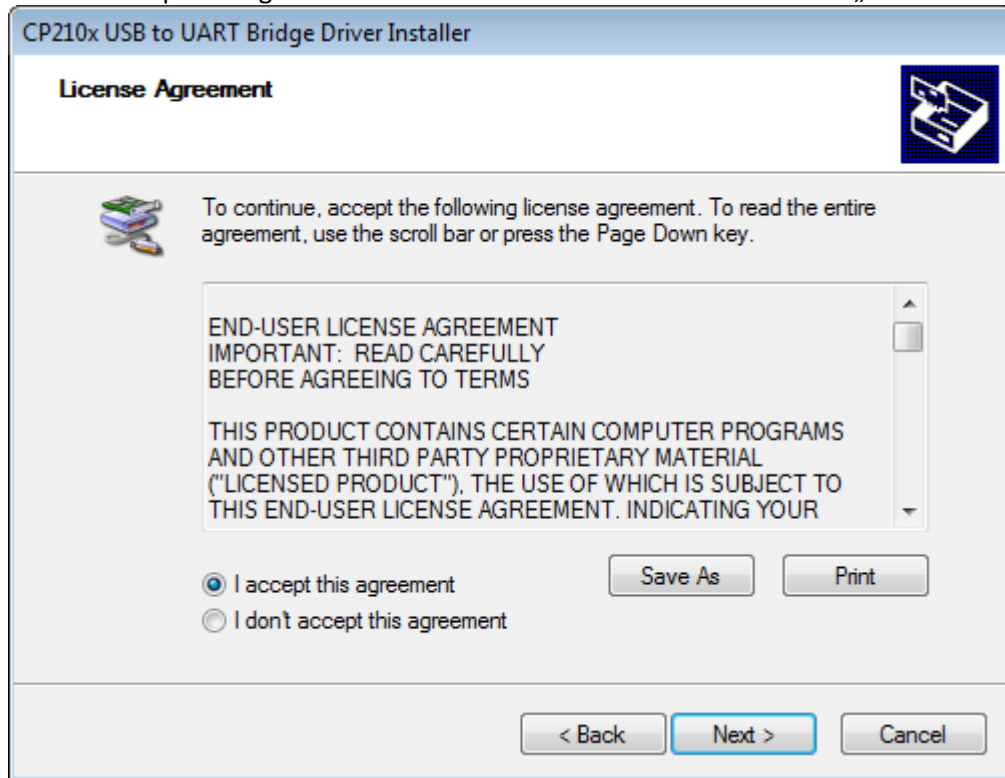
### Step 2

The following window appears after a few moments. Then click on „**Next**“.

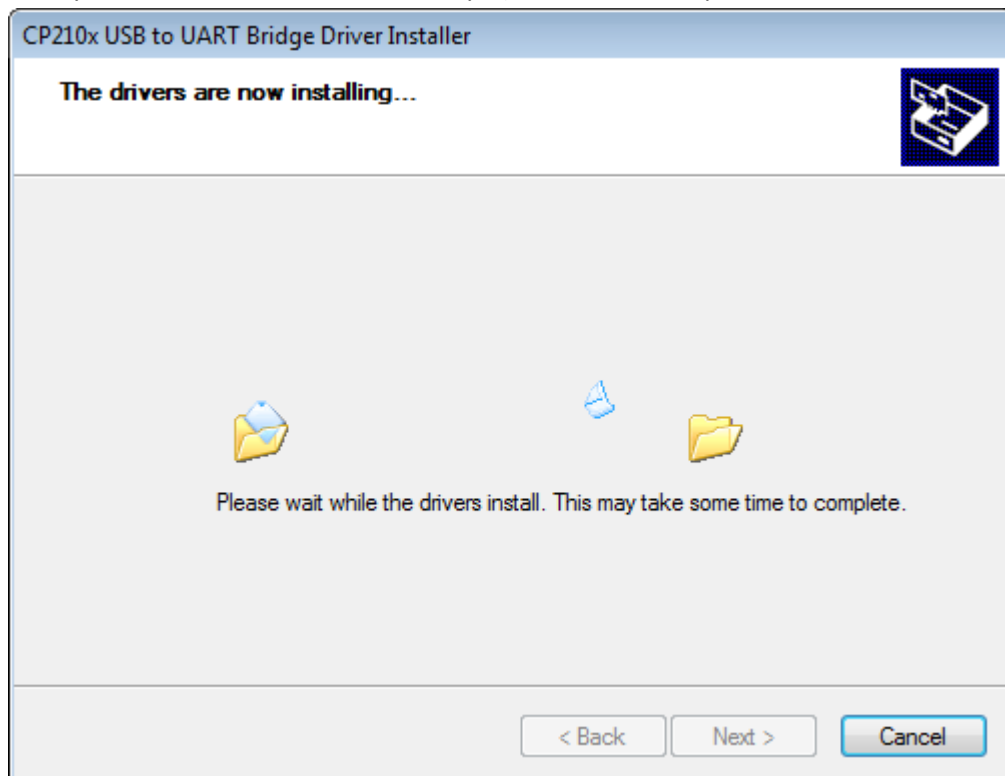


**Step 3**

Select "I accept this agreement" on the window shown below and click „Next“.

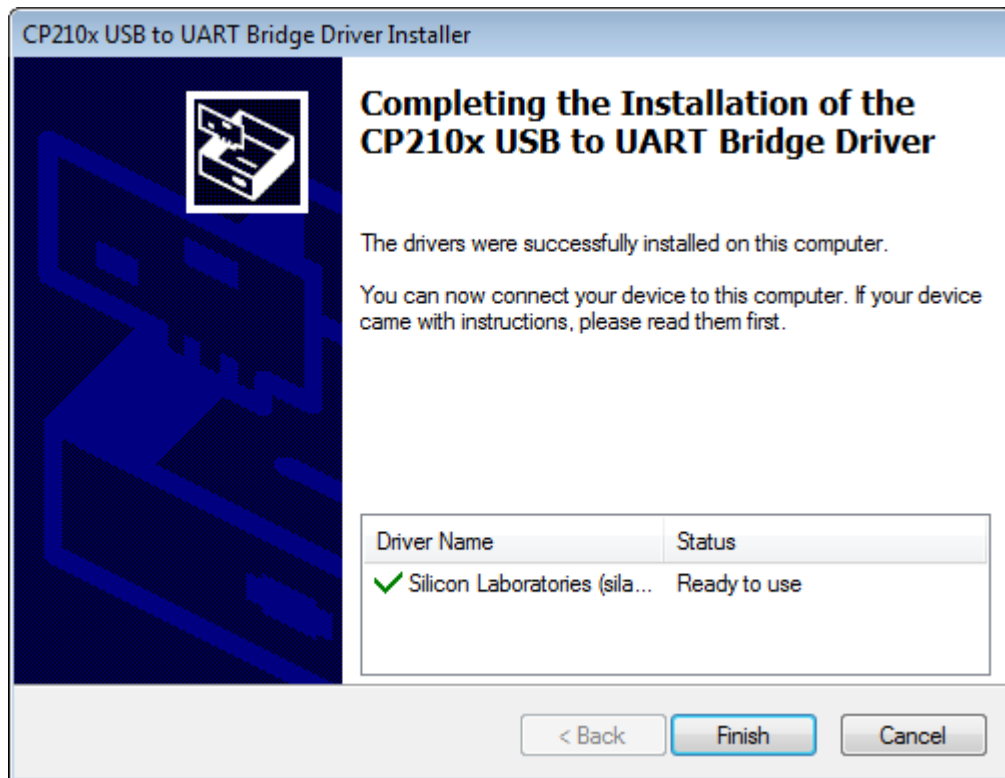
**Step 4**

After you have clicked on "Next" in Step 3) the installation process starts immediately.



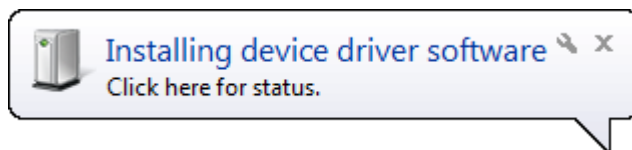
**Step 5**

You see the below window if the install files has been successfully copied tot he selcted folder. Click on **“Finish”** to complete driver installation.

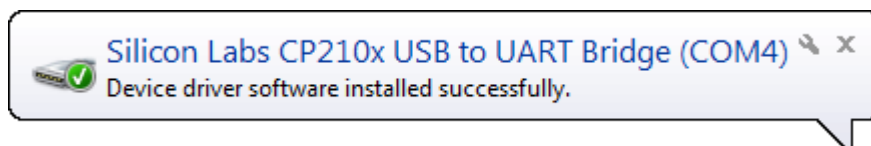
**Step 6**

Now please connect your reader device to a free USB port. The installation of the device drivers starts automatically. The following balloon tip messages will appear in the notification area during finalizing driver installation:

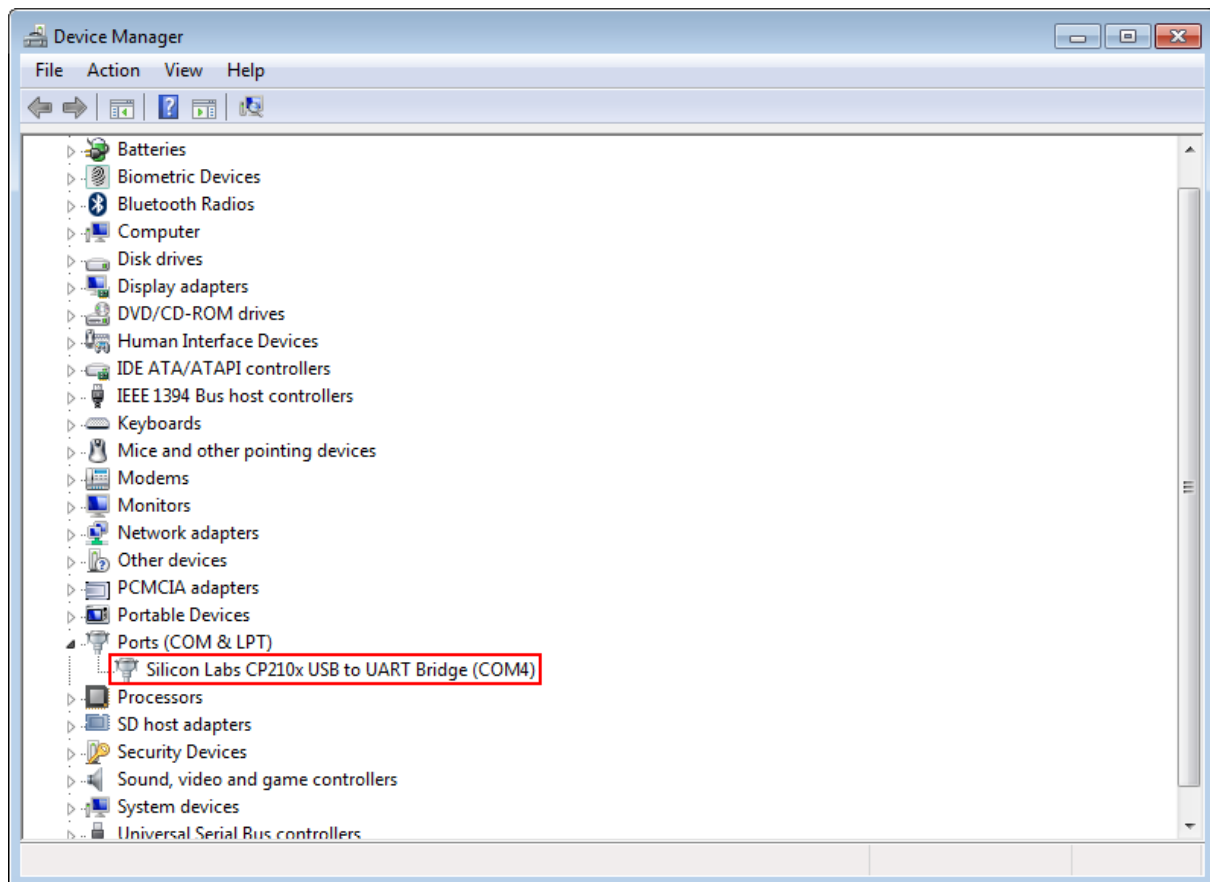
*Driver is being installed after device was plugged in*



*Driver has been successfully installed (showing also COM port version used)*

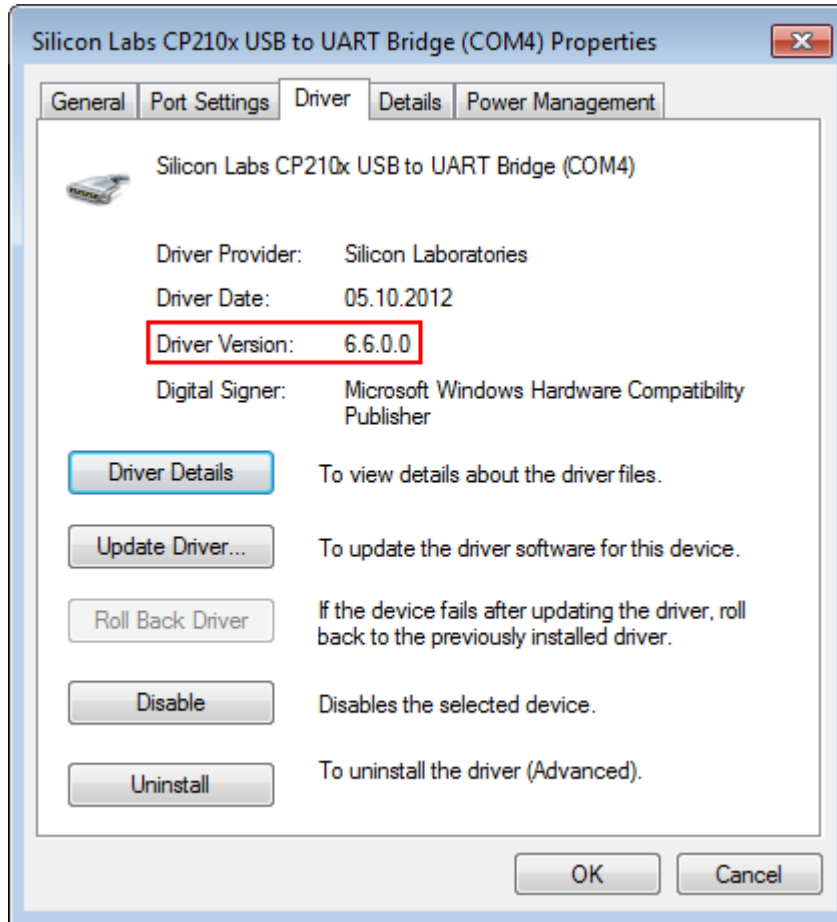


To verify this you can go to the Windows device manager and check if the red marked entry is listed:






In the properties of the virtual COM port (see above) you can check the version of the currently installed VCP driver:



## 5. Driver uninstallation

In the software section of the Windows control panel you will find the following entry (date & driver version depends on installed driver version).

 Windows Driver Package - Silicon Laboratories (silabenm) Ports (10/05/2012 6.6.0.0)

Select the entry shown above and click on "Uninstall".

In the pop-up window which will appear (see below) click on "Yes" to start the uninstall process.

