



# Hirsch Velocity

## Security Management System



Hirsch Velocity is an all-in-one software platform designed to manage access control and security operations across a wide range of facilities. From securing individual high-risk rooms to managing multi-building, multi-location campuses, Velocity has it all covered.

### Full-Spectrum Access Control

With real-time capabilities, Velocity enables you to control doors, gates, turnstiles, elevators, and more. Monitor user movements, prevent unauthorized access, maintain compliance standards, and generate a comprehensive audit trail seamlessly.

### Latest Software Upgrade: Velocity 3.8

The most recent iteration, Hirsch Velocity 3.8, delivers unprecedented security and interoperability, along with enhanced scalability. Fully compatible with Hirsch's latest Mx Controller hardware, it also supports the most recent versions of Microsoft Windows, SQL Server, and the latest network encryption protocol (TLS).

### Real-Time Control

- Instant access control via mobile or fixed devices, enhanced by the Velocity Web Services Console

### Award-Winning, Robust Security

- Maintains its acclaimed architecture while adding performance enhancements

### Latest Compatibility

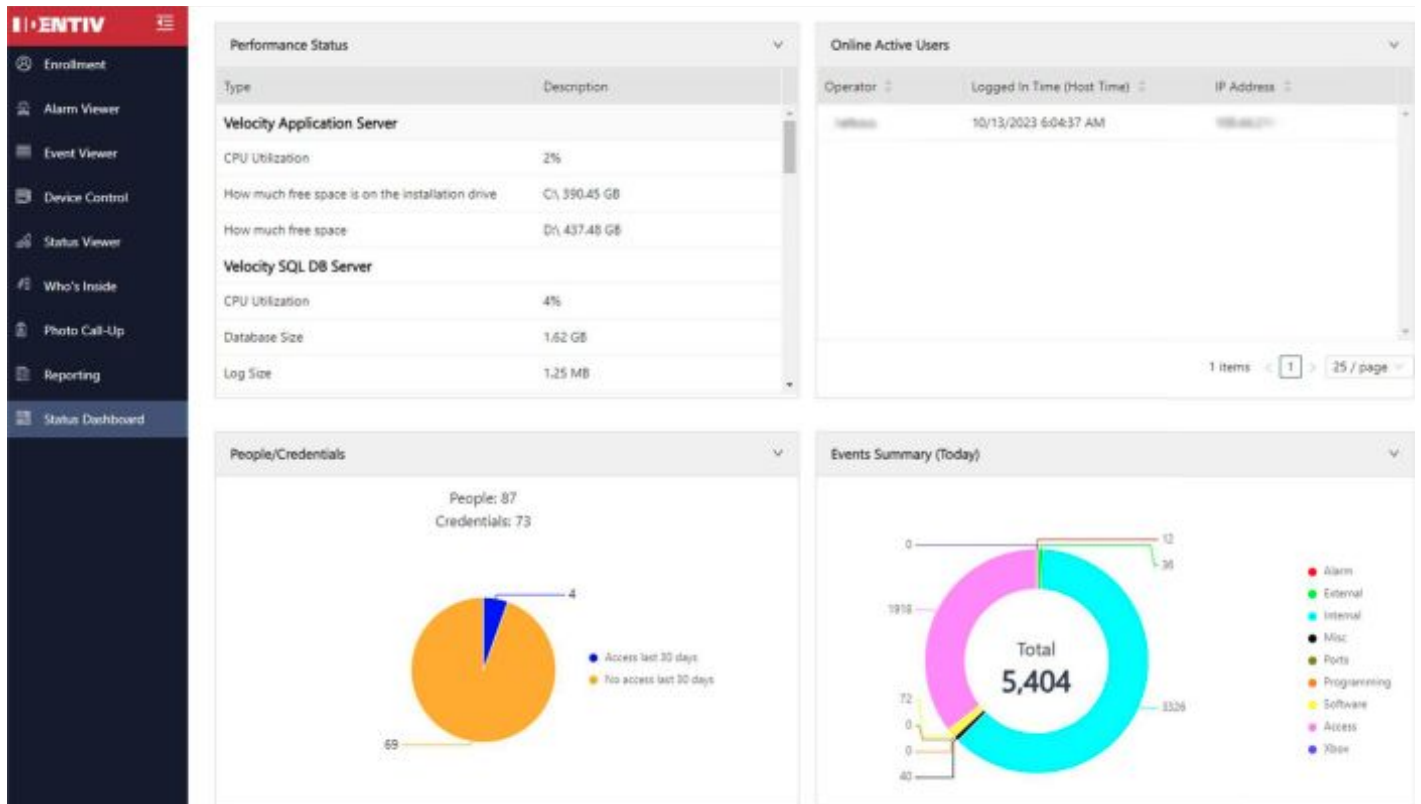
- Fully compatible with the latest Hirsch Mx Controller and updated software environments, including Windows and SQL Server

### User-Friendly

- Features a modular UI supported by tutorials, making transitions easier for both new and experienced users

## On-the-Go Management with Web Services Console

Administrators and security personnel can access real-time system information and control functionality on almost any device. This mobility feature makes it easier to manage your facility's security from anywhere.



## Built Hirsch Tough

Velocity 3.8 continues the Hirsch legacy of robust, award-winning architecture and user-friendly design. Existing users will find the transition to the new version seamless, thanks to its modular user interface. New users can quickly get up to speed with the help of extensive tutorials and help files. Performance enhancements provide faster access to administrative features, such as animated floor plans and alarm monitoring.

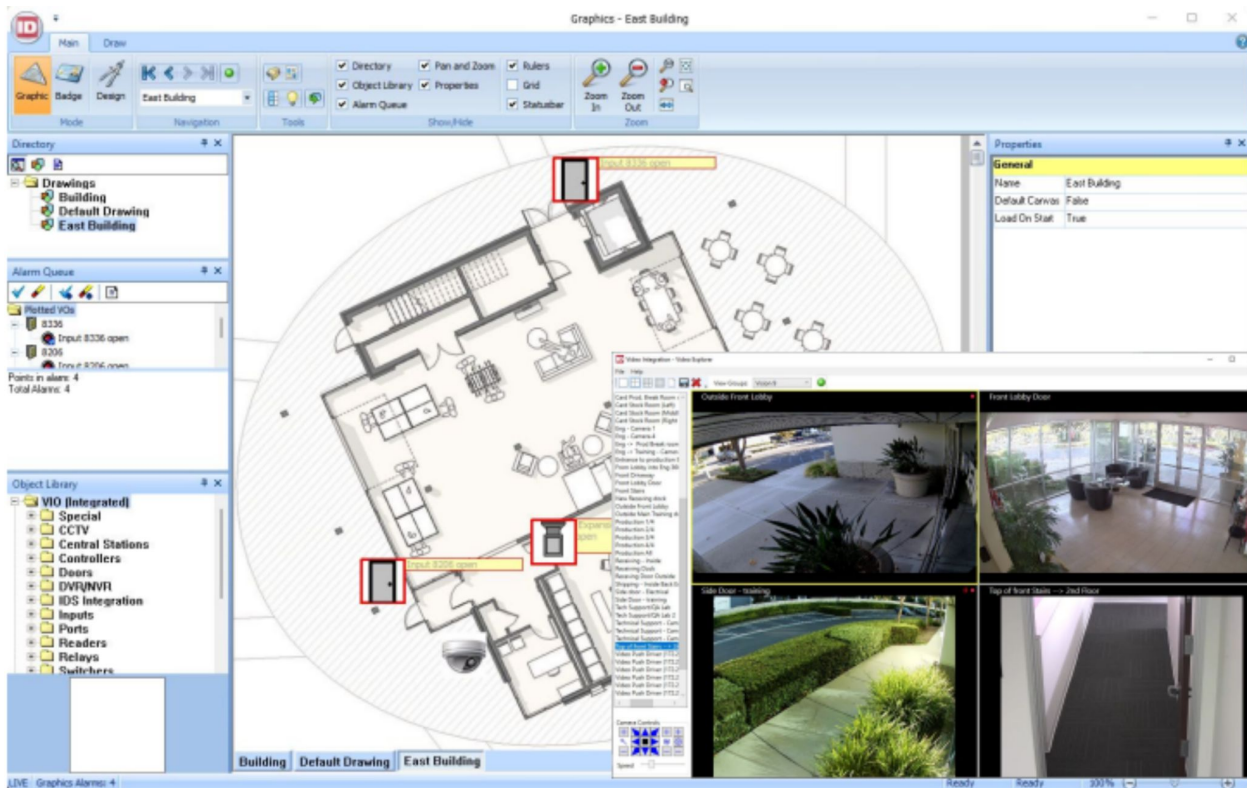


Figure 2: Velocity Security Management Console

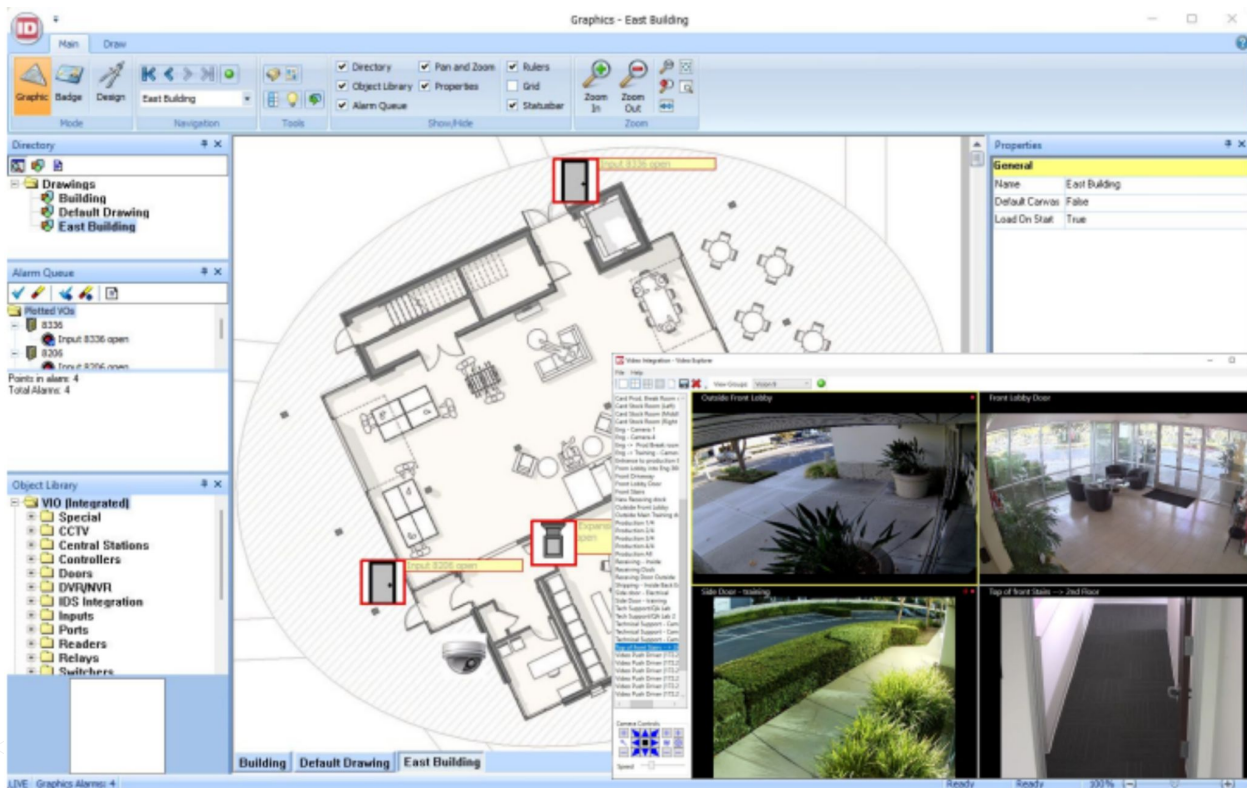


Figure 3: Velocity Security Management Graphics and Video

## UI Core Features

Feature	DESCRIPTION
<b>Administration</b>	Contains Velocity, controllers, and interfaces configuration tools
<b>Alarm Viewer</b>	Monitor and acknowledge active system alarms, such as Forced Entry, DOTL (door open toolong), and many more
<b>Command and Control</b>	Command Sets, Global I/O events, Threat Level management, and Control Zone management for sophisticated security solutions
<b>Graphics</b>	Provide a visual interface for door status, alarms, and links to video feeds
<b>Event Viewer</b>	View system events as they occur with as much granularity as desired
<b>Enrollment Manager</b>	A comprehensive enrollment tool for managing individuals, groups, and their credentials
<b>Badging Design</b>	Design and control the issuance of credentials from within the Velocity environment
<b>Report Manager</b>	Choose from 75 default reports or create your own; export in wide variety of formats
<b>Velocity Web Services Client</b>	Access information and control systems via a web link; optimized for chrome-based browsers
<b>Who's Inside</b>	Monitor the personnel in a given building or floor; ideal for managing emergency egress/mustering
<b>Customization Manager</b>	Customize alarms, events, notes, messages, and field titles for system specific behavior
<b>Status Viewer</b>	Review the status of all hardware connected to a system, including doors, inputs, relays, controllers, and more
<b>Scheduling Agent</b>	Schedule a wide range of system tasks, like deactivating credentials, running logs, printing reports, or executing command sets
<b>Trigger Action Manager</b>	Pair an action to an event (i.e., associate an alarm with a video camera)
<b>Roles and Operators</b>	Granular role permissions based on operator functions and restrictions
<b>Video Integrations</b>	Associate doors with cameras, view video with the built-in video viewer, launch from active alarm, graphics module, or the viewer
<b>IDS Integrations</b>	Allows control of supported intrusion system's arming status by area or for the entire installation. The system also allows for points be bypassed, while also giving users the ability to trigger outputs tied into the intrusion system

## Velocity Part Numbers

PRODUCT	DESCRIPTION
<b>VEL-EXPRESS</b>	Velocity Software License - Express edition. Provides support for 32 modules, 1 workstation and application features. One license required per Velocity Express 3.7 or higher. Optional Velocity Plug-ins not supported. First year SSA (Software Support Agreement) required, not included.
<b>SSA-VEL-EXPRESS</b>	Velocity Express Software Support Agreement - 1 Year.*
<b>VEL-SERVER</b>	Velocity Software License - Server edition. Provides support of 64 modules, 10 thick client connections and application features. One license required per Velocity Server 3.7 or higher. First year SSA (Software Support Agreement) required, not included.
<b>SSA-VEL-SERVER</b>	Velocity Server Software Support Agreement - 1 Year.*
<b>MOD-ADD-16</b>	Velocity security management application software, Server edition. Additional 16 Modules. Requires
<b>SSA-MOD-16</b>	Velocity Server security management application maintenance - 1 Year service for support of additional 16 modules.*
<b>MOD-ADD-128</b>	Velocity security management application software, Server edition. Additional 128 Modules. Requires
<b>SSA-MOD-128</b>	Velocity Server security management application maintenance - 1 Year service for support of additional 128 modules.*
<b>MOD-ADD-512</b>	Velocity security management application software, Server edition. Additional 512 Modules. Requires
<b>SSA-MOD-512</b>	Velocity Server security management application maintenance - 1 Year service for support of additional 512 modules.*
<b>MOD-ADD-1024</b>	Velocity security management application software, Server edition. Additional 1024 Modules. Requires VEL-SERVER. First year SSA (Software Support Agreement) required, not included.
<b>SSA-MOD-1024</b>	Velocity Server security management application maintenance - 1 Year service for support of additional 1024 modules.*
<b>CLIENT-ADD-5</b>	Velocity security management application software, Server edition. Additional 5 Thick Clients. Requires VEL-SERVER. First year SSA (Software Support Agreement) required, not included.
<b>SSA-CLIENT-5</b>	Velocity Server security management application maintenance - 1 Year service for support of additional 5 thick clients.*

\*One Month, 3 Year and 5 Year options available.

## Optional Velocity Plugin Licenses

PRODUCT	DESCRIPTION
<b>VEL-VCCS</b>	Velocity Certificate Checking Service plug-in license. For support of PIV/CAC/TWIC certificate checking. Requires VELFED100/250 for FICAM compliance, GSA APL #10103. One license required per Velocity Server 3.7 or higher. First year SSA (Software Support Agreement) required, not included.
<b>VEL-VMS-VV-PLUGIN</b>	Velocity integration for Velocity Vision Video Management System plug-in license. First year SSA (Software Support Agreement) required, not included.
<b>VEL-3VR-PLUGIN</b>	Velocity integration for 3VR plug-in license. First year SSA (Software Support Agreement) required, not included.
<b>VEL-VMS-BOSCH-PLUGIN</b>	Velocity integration for Bosch Video Management System plug-in license. First year SSA (Software Support Agreement) required, not included.
<b>VEL-EXACQ-PLUGIN</b>	Velocity integration for Exacq plug-in license. First year SSA (Software Support Agreement) required, not included.
<b>VEL-AD-PLUGIN</b>	Velocity integration for American Dynamics plug-in license. First year SSA (Software Support Agreement) required, not included.
<b>VEL-VSM-PLUGIN</b>	Velocity integration for Cisco VSM plug-in license. First year SSA (Software Support Agreement) required, not included.
<b>VEL-VMS-MS-PLUGIN</b>	Velocity integration for Bosch Video Management System plug-in license. First year SSA (Software Support Agreement) required, not included.
<b>VEL-CUCM-PLUGIN</b>	Velocity integration for Cisco Unified Call Manager plug-in license. First year SSA (Software Support Agreement) required, not included.
<b>VEL-IDS-BOSCH-PLUGIN</b>	Velocity integration for Bosch Video Management System plug-in license. First year SSA (Software Support Agreement) required, not included.
<b>VEL-IDS-DMP-PLUGIN</b>	Velocity integration for DMP Intrusion Detection System plug-in license. First year SSA (Software Support Agreement) required, not included.

*Notes: Optional plugins are not supported on VEL-EXPRESS  
Contact [sales@hirschsecure.com](mailto:sales@hirschsecure.com) with version compatibility questions  
See Velocity VMS Datasheet for full Plugin Data.  
See Bosch/DMP IDS Integration sheets for IDS integration information.*

## Wireless Lock Part Numbers

PRODUCT	DESCRIPTION
<b>MX-1-W</b>	Velocity security management application software license. For Mx-1 only, adds 8 wireless locks, counts against module license. First year SSA (Software Support Agreement) required, not included.
<b>SSA-MX-1-W</b>	Velocity Mx-1, 8 wireless locks Software Support Agreement - 1 Year.*

\*One Month, 3 Year and 5 Year options available.

## Hirsch Professional Services

Velocity's powerful SDK enables several types of systems to integrate with Velocity such as HR, IDMS, Key Management, URL Triggers, SIEMS, PSIMs, and others. Contact [sales@hirschsecure.com](mailto:sales@hirschsecure.com) for the latest information on integration options, or to get further details on Hirsch's .NET SDK.

Velocity seamlessly bridges physical access and IT infrastructures in a powerful and easy-to-use security management solution that scales from single-user applications to enterprise-class environments, connecting hundreds of doors and desktops for thousands of users. Utilized by IT, security, facility management, and guard personnel in commercial, governmental, and educational institutions worldwide. Velocity integrates access control, intrusion detection, video surveillance and recording, photo ID badging, smart cards, biometrics, and interoperability with other building and business systems.