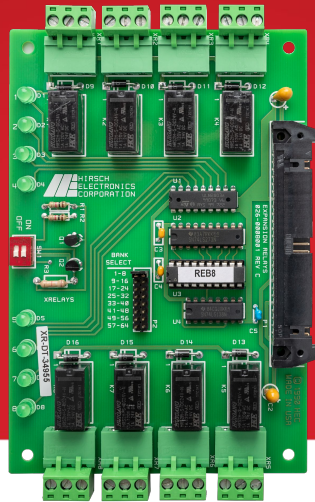




Relay Expansion Board with Eight (8) Dry Relay Outputs (REB8)



Identiv's Relay Expansion Board (REB8) provides eight (8) additional two (2) AMP form C dry relay outputs, rated for 24VDC. These relays are socketed and removable.

The Relay Expansion module is used for a variety of security customization functions in an access control environment.

Up to five REB8s can be installed on any Hirsch Mx Controller.

Such switches, when closed, provide an input to a low-voltage sensing circuit. However, the switch can also be used to activate the coils of a remote heavy-duty relay.

The REB8 can be used to trigger in a variety of scenarios, include upon access granted, access denied, and a variety of events.

Modular

- Up to 40 expansion relays (elevators, sounders, intrusion, shooter)
- Add up to 5 REB8 per controller

High Performance

- 2 AMP 24VDC form C relays

Simple

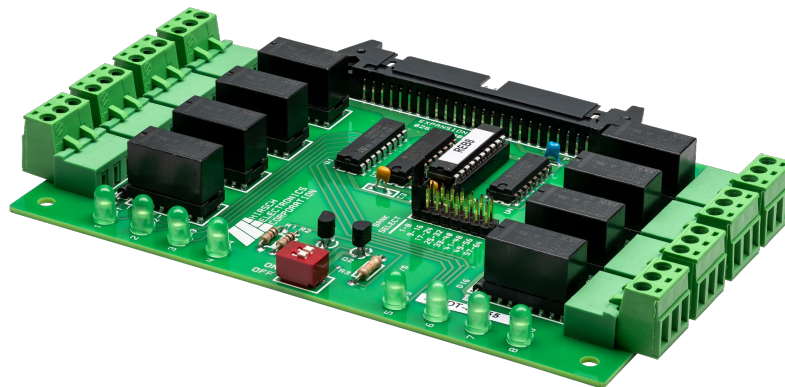
- Dry contacts for any I/O application

Use Cases

- Elevator Control
- Various LED Control
- Trigger a sounder
- Alarms

Specifications

Communications	
Wiring from Controller	EBIC5
Physical	
Alarm	Physical tamper on panel enclosure
Dimensions	6.85 x 4.05 x .52 in (17.4 x 10.3 x 1.32 cm)
Shipping Weight	1 lb (0.45 kg)
Operating Temperature Range	32° to 140°F (0° to 60°C)
Relative Humidity	0 to 90%, non-condensing
Listings and Approvals	CE



Please contact your Identiv Regional Sales Manager to arrange for a web discussion and demo by calling +1-888-809-8880, emailing sales@identiv.com, or visiting identiv.com.