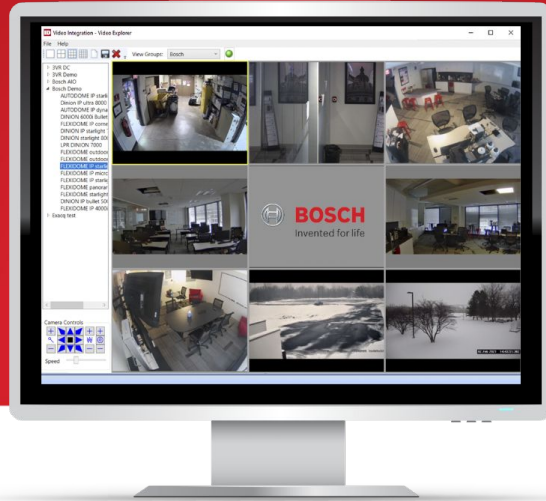




# Hirsch Velocity Software

## Bosch VMS Integration



Identiv's Hirsch Velocity Software manages access control, provides intrusion detection, and now integrates with the Bosch VSM and cameras.

Video integration is a vital element of a complete security and access control system. When integrated properly with Velocity, multiple devices combine best-in-class physical security into one powerful solution that manages video, audio, and data.

Identiv partnered with Bosch to develop this exact type of seamless integration. The solution allows full video management system (VMS) functionality with centralized control of cameras, connected devices, recording servers, and redundant servers.

As a complete security management system, Velocity verifies who is allowed in and out of facilities.

Combining this system with Bosch VMS allows for visual verification of who is moving through high-security areas. The integration provides video evidence for security events, including tailgating. Tailgating occurs when someone is trailing an employee and gains entry to an area without swiping a card. Recording IP video at all doors allows quick identification of who should or should not be in the building.

All Bosch cameras, network video recorders (NVRs) and Onvif-compatible cameras can be integrated with Velocity to provide a single interface to track video and access control systems.

### Integrated Video Intelligence

- View live video in full screen (2x2/3x3/4x4 layouts)
- Quickly scan and view recorded video
- Search video by events

### Velocity Highlights

- Velocity Trigger Action Manager
- Integrates with Velocity Graphics

### Bosch Highlights

- Multiple video playback speeds
- Control PTZ cameras

### Added Camera Support

- Connects with all Bosch camera families, including AUTOMDOME, FLEXIDOME, DINION, and MIC
- Integrates with all Onvif-compatible cameras

## Features

Product	Description
Add/Manage Bosch VMS from Velocity	Add, edit, or delete the Bosch VMS using the Velocity interface configuration
Test DVR Network	Test network connection from Velocity and sync or validate times and dates
Integrated Cameras	View integrated cameras from Velocity and make them available for use in the Velocity hardware tree and graphics canvases; includes connection state and viewing options
Trigger Action Manager	Set trigger actions on Velocity events to call up specific cameras/views and automatically display the video in Velocity; trigger actions are also used to instruct the VMS to record, with pre/postalarm and frame rate
Authentication	Authentication to Bosch VMS using login specified in Bosch VMS; provides encrypted communication
Live Video	Get live video display and trigger manual recordings on individual cameras from within Velocity
Playback	Watch playback of historical video recorded in response to triggered alarms setup in the trigger action manager; access recorded video directly from Velocity alarm manager
Video Explorer	Display live video in the Velocity video explorer window which supports up to 16 panels at a time
Integrated Events	Events from the Bosch VMS can be mapped to the equivalent Velocity integrated events like motion detected and camera offline; events can be used to perform actions in Velocity (lockdown, email, trigger master control zone)
Graphics	Configure the Bosch VMS within graphics object library; view live video

## Part Numbers

Part Number	Description
<b>VEL-VMS-BOSCH-PLUGIN</b>	Velocity integration for Bosch Video Management System plug-in license. First year SSA (Software Support Agreement) required, not included.
<b>SSA-VEL-VMS-BOSCH-PLUGIN</b>	Velocity integration for Bosch Video Management System Software Support Agreement - 1 Year.

Figure 1: Velocity Video Explorer

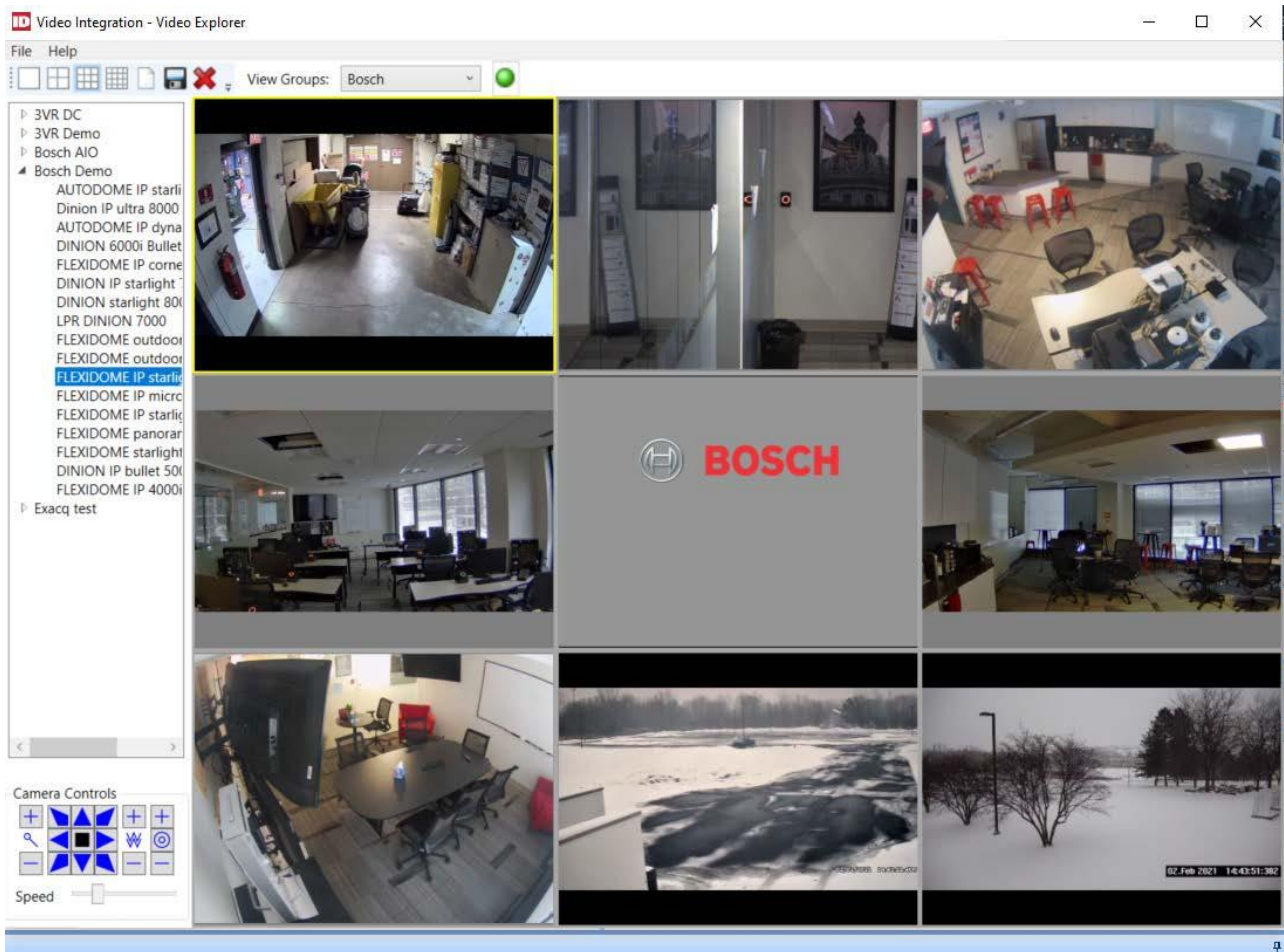


Figure 2: Velocity Interfaces Configuration

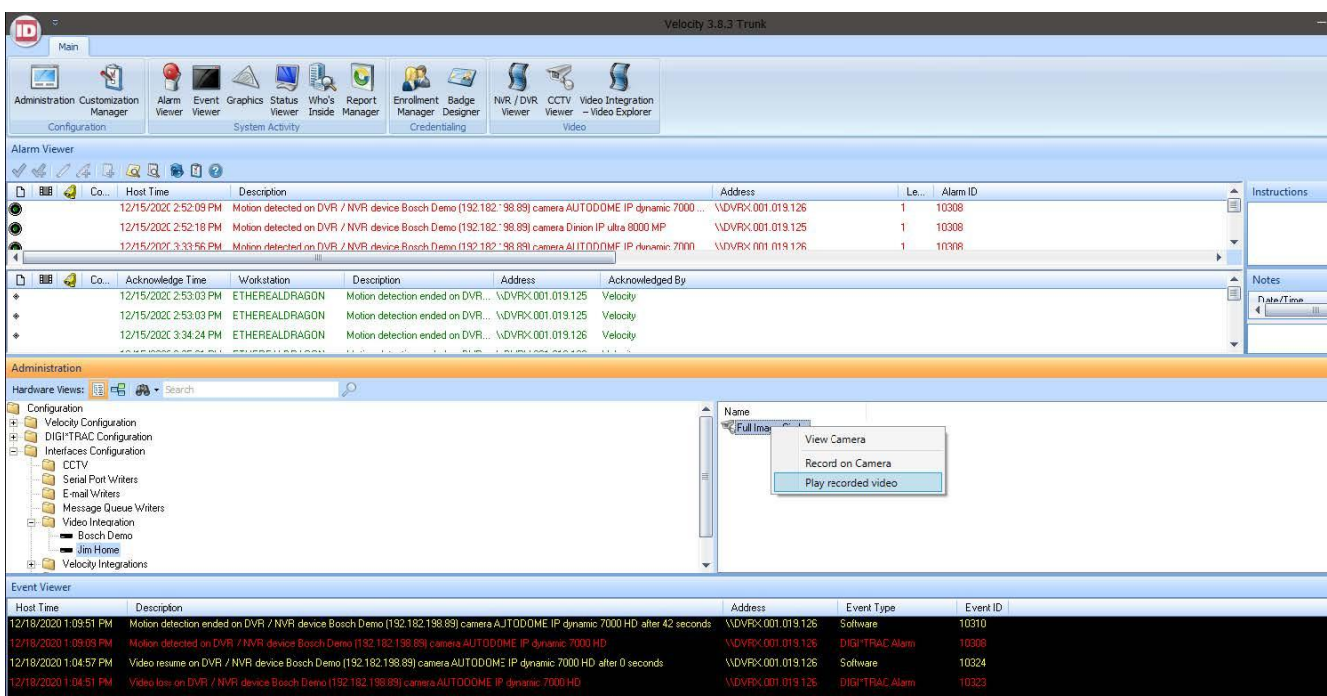


Figure 3: Velocity Trigger Action Manager

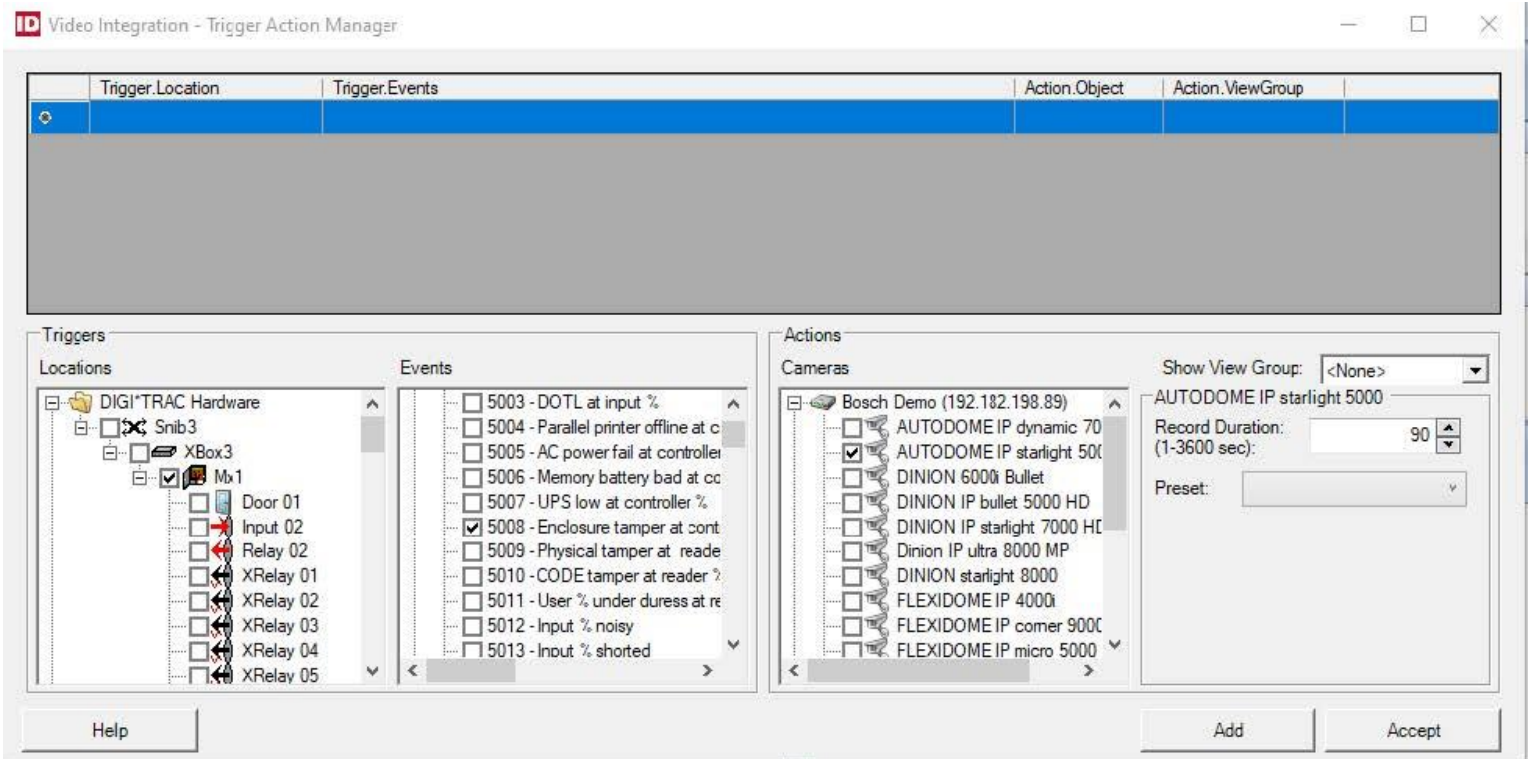


Figure 4: Play Video from Alarm Event

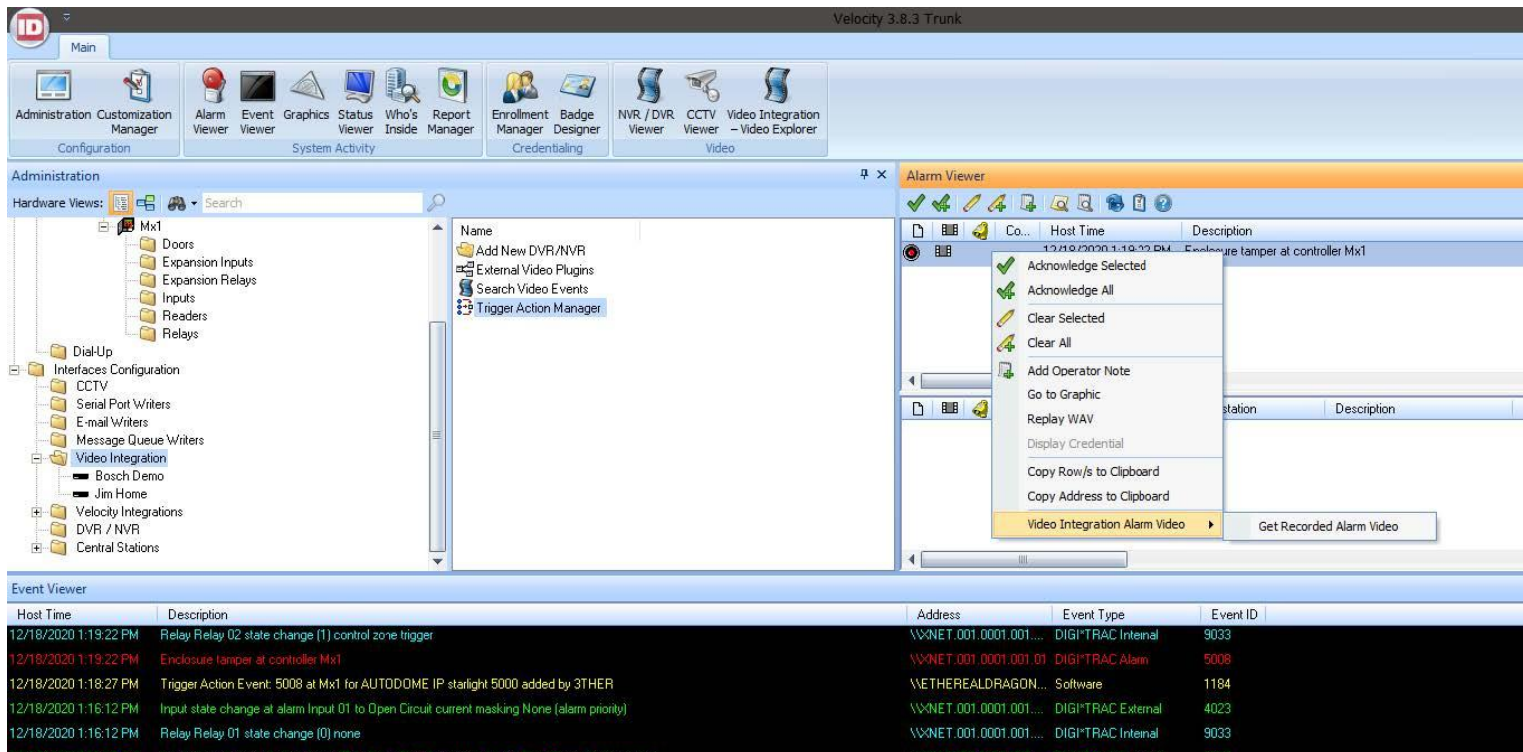


Figure 5: Video Search and Playback

**ID** Video Integration - Search Video

**Search**

Cameras:

- Bosch Demo
  - AUTODOME IP starlight 5000
  - Dinion IP ultra 8000 MP
  - AUTODOME IP dynamic 7000 HD
  - DINION 6000i Bullet
  - FLEXIDOME IP comer 9000 MP
  - DINION IP starlight 7000 HD
  - DINION starlight 8000
  - LPR DINION 7000
  - FLEXIDOME outdoor 5000 IR 5MP
  - FLEXIDOME outdoor 5000 HD 2MP
  - FLEXIDOME IP starlight 7000 V
  - FLEXIDOME IP micro 5000
  - FLEXIDOME IP starlight 6000 VR
  - FLEXIDOME panoramic 5000

Date Range:

Wednesday, December 11, 2019 1:23:29 PM

Friday, December 18, 2020 1:23:29 PM

Events:

Event ID	Event Type	Description
<input checked="" type="checkbox"/> 5008	Alarm	Enclosure tamper at controller %


Select All    Unselect All

Select All    Unselect All

Help    Search

**Results**

Start Time	Duration	Description	
12/18/2020 1:19:22 PM	15	Enclosure tamper at controller Mx1	<a href="#">Play</a>



Start Date/Time: 12/18/2020 1:19:22 | End Date/Time: 12/18/2020 1:19:37 |

Speed: Normal